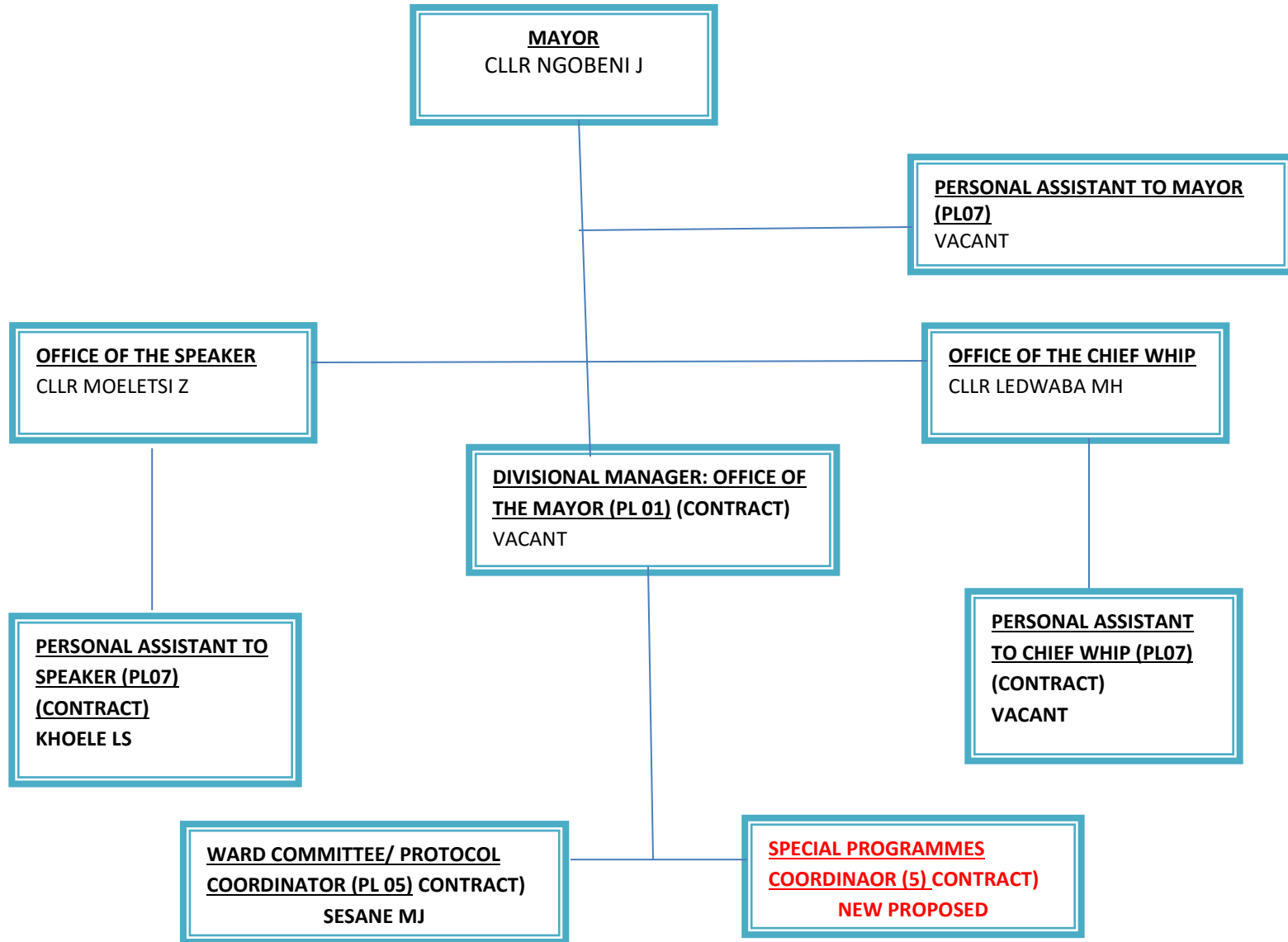


**DRAFT**  
**ORGANIZATIONAL**  
**STRUCTURE**  
**2018/19**

# **MAYOR'S OFFICE ORGANOGRAM**

**ORGANOGRAM- OFFICE OF THE MAYOR/CHIEF WHIP/SPEAKER**



# **MUNICIPAL MANAGER'S OFFICE ORGANOGRAM**

**ORGANOGRAMS – MUNICIPAL MANAGER’S OFFICE DIVISION**

**MUNICIPAL MANAGER  
MAKHUBELA SM**

**CFO  
MARUTHA RM**

**MCS  
SELAPYANE JB**

**M SOCOM  
VACANT**

**MTS  
VACANT**

**MSPED  
VACANT**

**DM: COMMUNICATIONS  
& PUBLIC PARTICIPATION  
(PL01)  
VACANT**

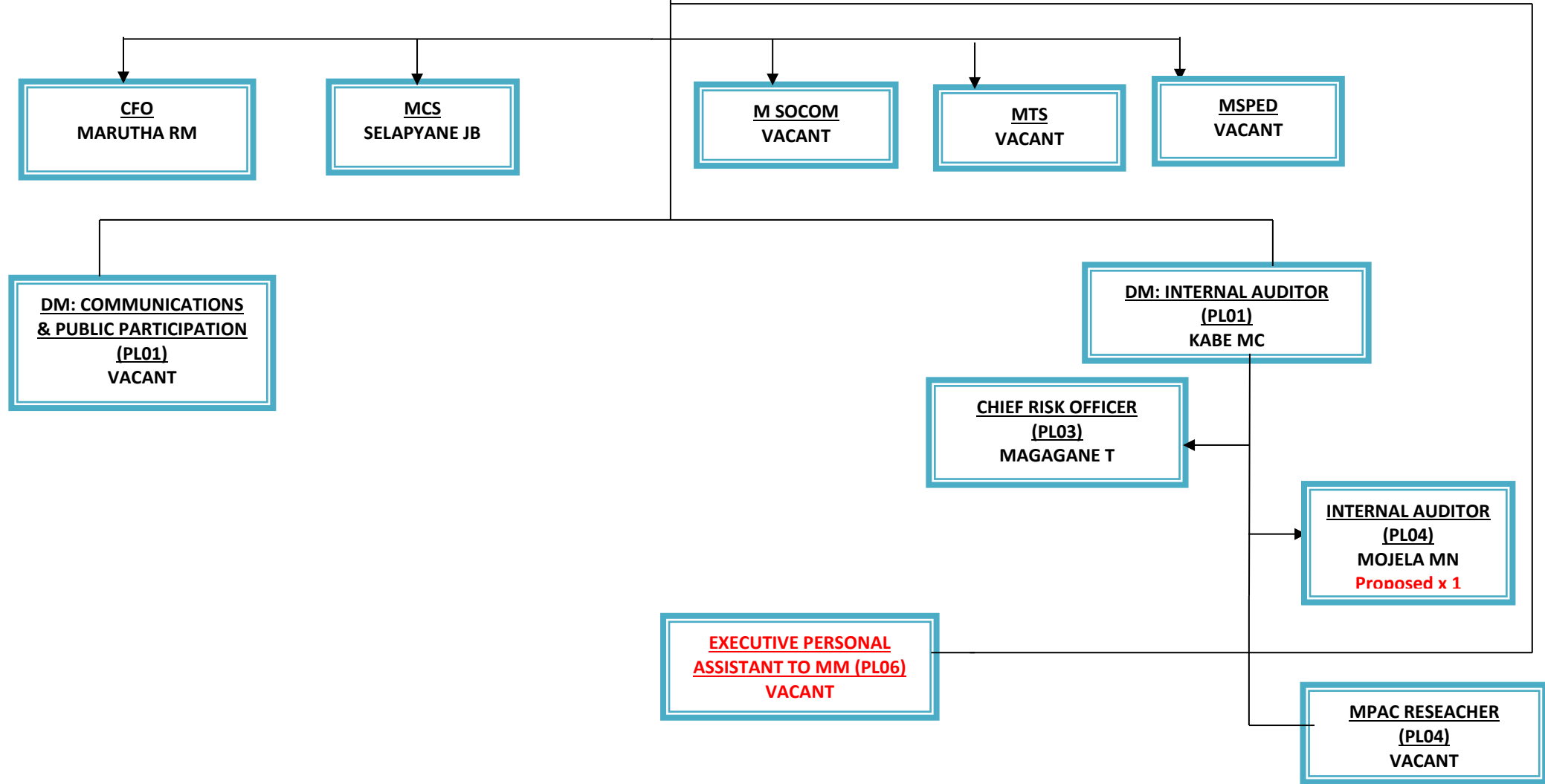
**DM: INTERNAL AUDITOR  
(PL01)  
KABE MC**

**CHIEF RISK OFFICER  
(PL03)  
MAGAGANE T**

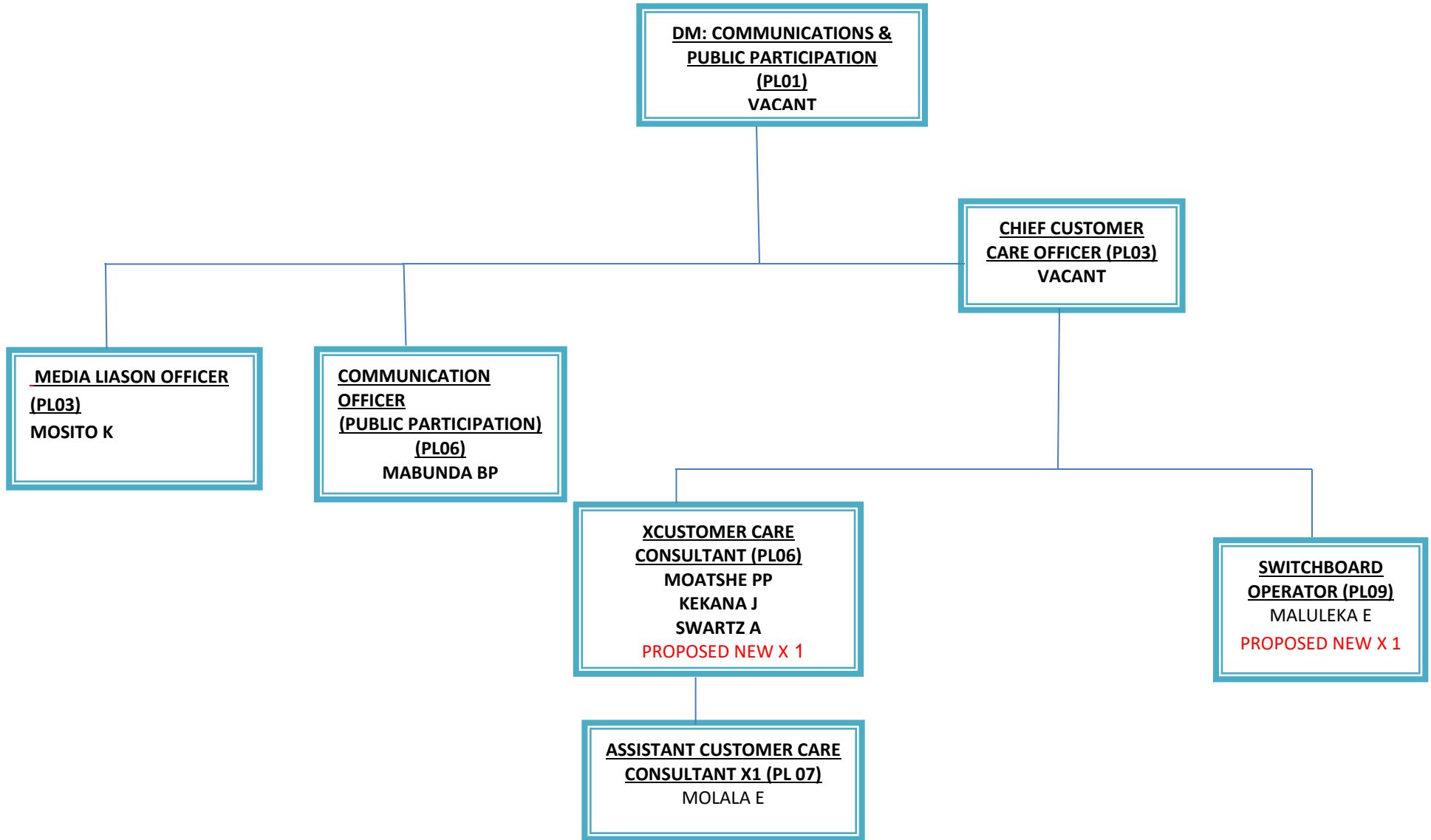
**INTERNAL AUDITOR  
(PL04)  
MOJELA MN  
Proposed x 1**

**EXECUTIVE PERSONAL  
ASSISTANT TO MM (PL06)  
VACANT**

**MPAC RESEACHER  
(PL04)  
VACANT**



**ORGANOGRAM- COMMUNICATION DIVISION**



# **TECHNICAL SERVICE'S OFFICE ORGANOGRAM**

**ORGANOGRAMS – MANAGER TECHNICAL SERVICES**

**MANAGER TECHNICAL SERVICES**  
VACANT

**PMU MANAGER (CONTACT)**  
VAN ZYL JLB (MIG)

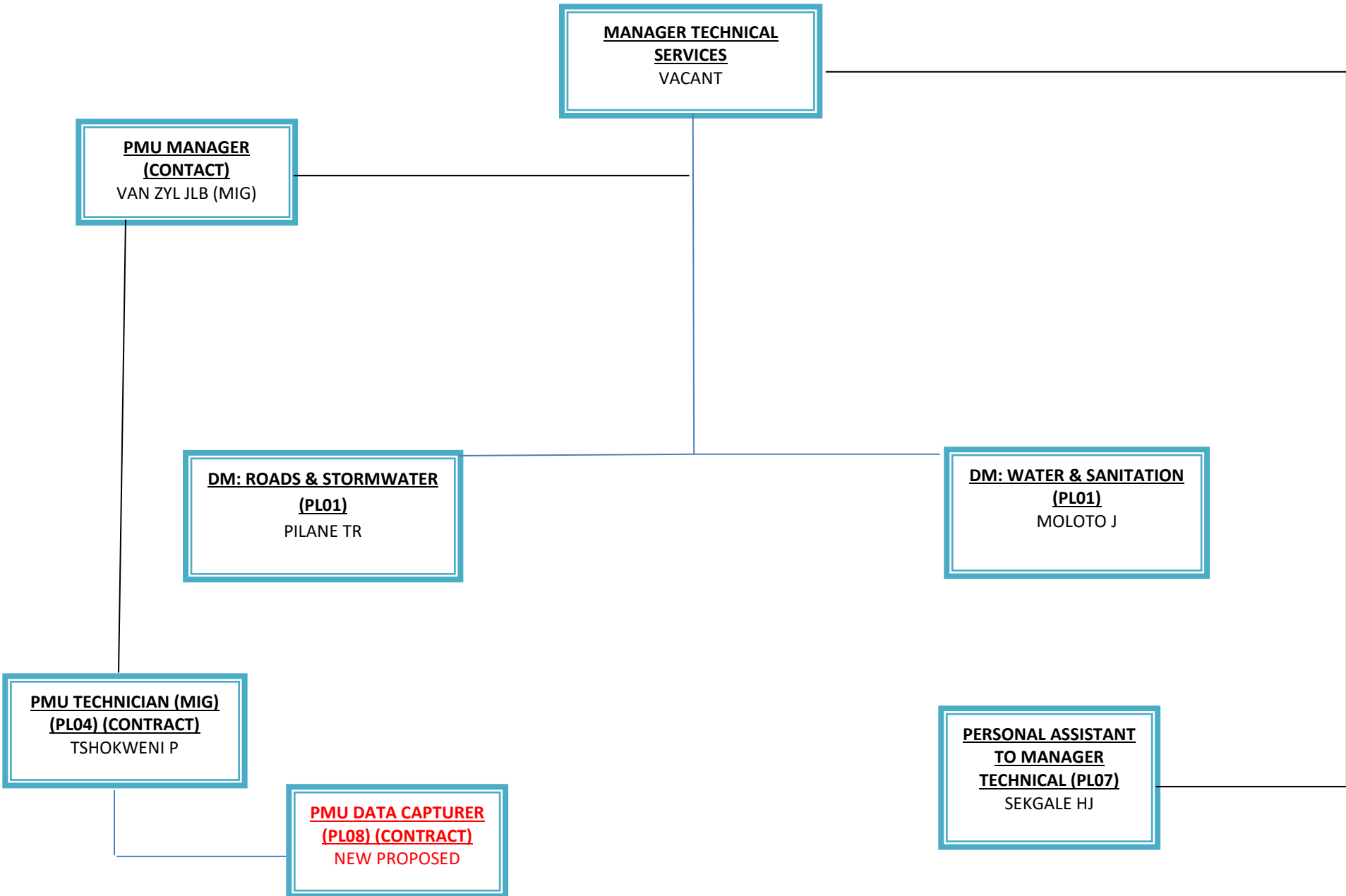
**DM: ROADS & STORMWATER (PL01)**  
PILANE TR

**DM: WATER & SANITATION (PL01)**  
MOLOTO J

**PMU TECHNICIAN (MIG) (PL04) (CONTRACT)**  
TSHOKWENI P

**PMU DATA CAPTURER (PL08) (CONTRACT)**  
NEW PROPOSED

**PERSONAL ASSISTANT TO MANAGER TECHNICAL (PL07)**  
SEKGALE HJ





**DIVISION: ROADS & STORMWATER**

**DIVISIONAL MANAGER:**  
**ROADS & STORMWATER:**  
**(PL01)**  
PILANE TR

**SUPERINTENDANT: ROADS**  
**MAINTENANCE: (PL05)**  
MOTHOKWA TP

**GRADER OPERATORX2 (PL08)**  
**VACANT**  
PROPOSED X1

**SUPERVISOR: ROADS**  
**CONSTRUCTION (PL09)**  
MOTLHATLHEDI TA

**STOREMAN (PL11)**  
ASCHEENDORF PM

**CONCRETE CUTTER**  
**OPERATOR (PL13)**  
**VACANT**

**HEAVY DUTY VEHICLE**  
**DRIVER X4(PL 10)**  
MOSELANE MD  
BALOYI PK  
RAMODIPA MS  
**VACANT X1**

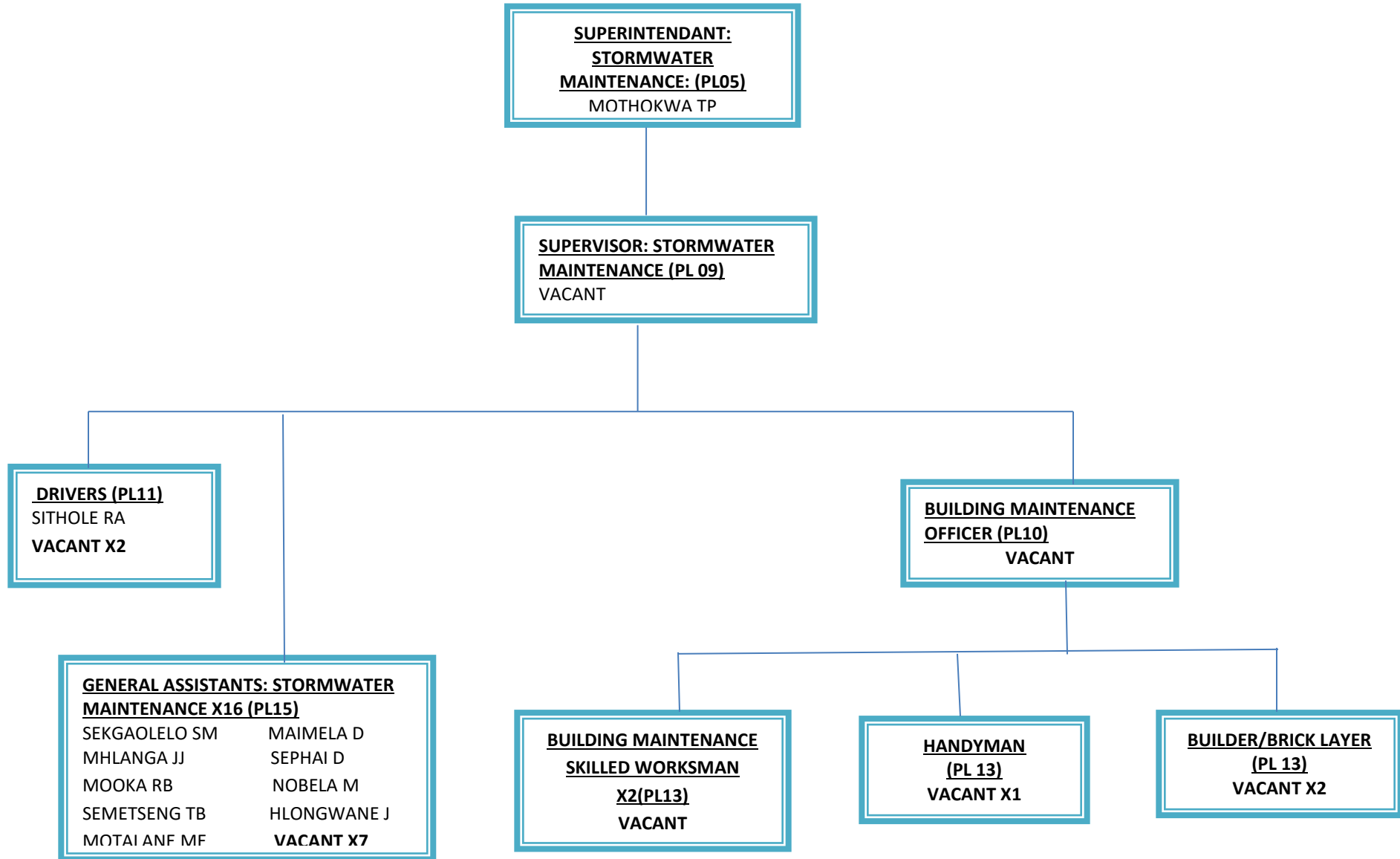
**BOMAG OPERATOR (T5)**  
**VACANT**

**WATERCART DRIVER 11**  
**VACANT**

**TIPPER DRIVERS X2 (PL10)**  
BALOYI SP  
**VACANT X1**

**GENERAL ASSISTANTS: ROADS CONSTRUCTION X10**  
**(PL15)**  
WALTERS EL                      MNGUNI MN  
MOLELE MT                      MAHLANGU SS  
SEKWAKWA K                    MOLEFE MM  
MAFIFI NA                        MALOBA FO  
KUBAYI G                         PAHL B

**DIVISION: ROADS & STORMWATER**



**DIVISION: WATER & SANITATION**

**DIVISIONAL MANAGER: WATER & SANITATION (PL01)**  
MOLOTO MJ

**SUPERINTENDANT: WATER (PL05)**  
MAGANA MA

**SUPERINTENDANT: WASTEWATER TREATMENT (PL05)**  
APHIRI MW

**WATER QUALITY OFFICER (PL07)**  
VACANT

**PROCESS CONTROLLER (PL07)**  
VACANT X1

**OFFICE ASSISTANT X 1(PL14)**  
VACANT

**PROCESS CONTROLLER (PL07)**  
VACANT X1

**SENIOR MACHINE OPERATOR (PL09)**  
SELEMELA MJ

**SENIOR ASSISTANT MACHINE OPERATOR (PL12)**  
KGATLA E

**MACHINE OPERATORS: SEWER PURIFICATION X 4 (PL13)**  
MOSHAMUDI MJ  
POLE P  
VACANT X 2

**MACHINE OPERATORS: WATER: WATER PURIFICATION X7(PL13)**  
MAHLAULA PR    LEDWABA LS  
PIMPI J            PHASHA KE  
VACANT X 4

**GENERAL ASSISTANT: WATER PURIFICATION X4(PL15)**  
MAPHOKGA VM  
MOKETLA BS        VACANT X 2

**MACHINE OPERATORS WATER PUMPSTATION X3 (PL13)**  
LETLHAKA J        MANYANE PS  
BOKAKA BB        PHASHA JL  
SENETLA V        CHAUKE MD  
NDHLOVU NG        MOSHOESHOE B  
BOKABA JH        KOMANE MD  
SOBEKWA MS        RAMABUSHA M  
VAN NIEKERK M        METHI A  
NDHLOVU JK        CHABALALA R  
MAHLANGU S        VACANT X2

**GENERAL ASSISTANTS: SEWER PURIFICATION X5(PL15)**  
VELANKULU NJ  
MANGANYE HJ    NDLOVU TN  
Vacant x 1

**DIVISION: WATER & SANITATION (CONTINUED)**

**DIVISIONAL MANAGER: WATER & SANITATION (PL01)**  
MOLOTO MJ

**SUPERINTEANDANT: WATER, SEWER AND RETICULATION MAINTENANCE (PL05)**  
LOUW A

**ELECTRO MACHANIC FITTING AND TURNING (PL06)**  
VACANT

**SPECIAL WORKSMAN NETWORK MAINTENANCE (PL07)**  
BALOYI GH

**ARTISAN ASSISTANT (PL10)**  
KGOMO MJ

**SUPERVISORS WATER & SANITATION MAINTENANCE (PL09)**  
MOLEFE MJ 2 VACANT  
KANYANI BI

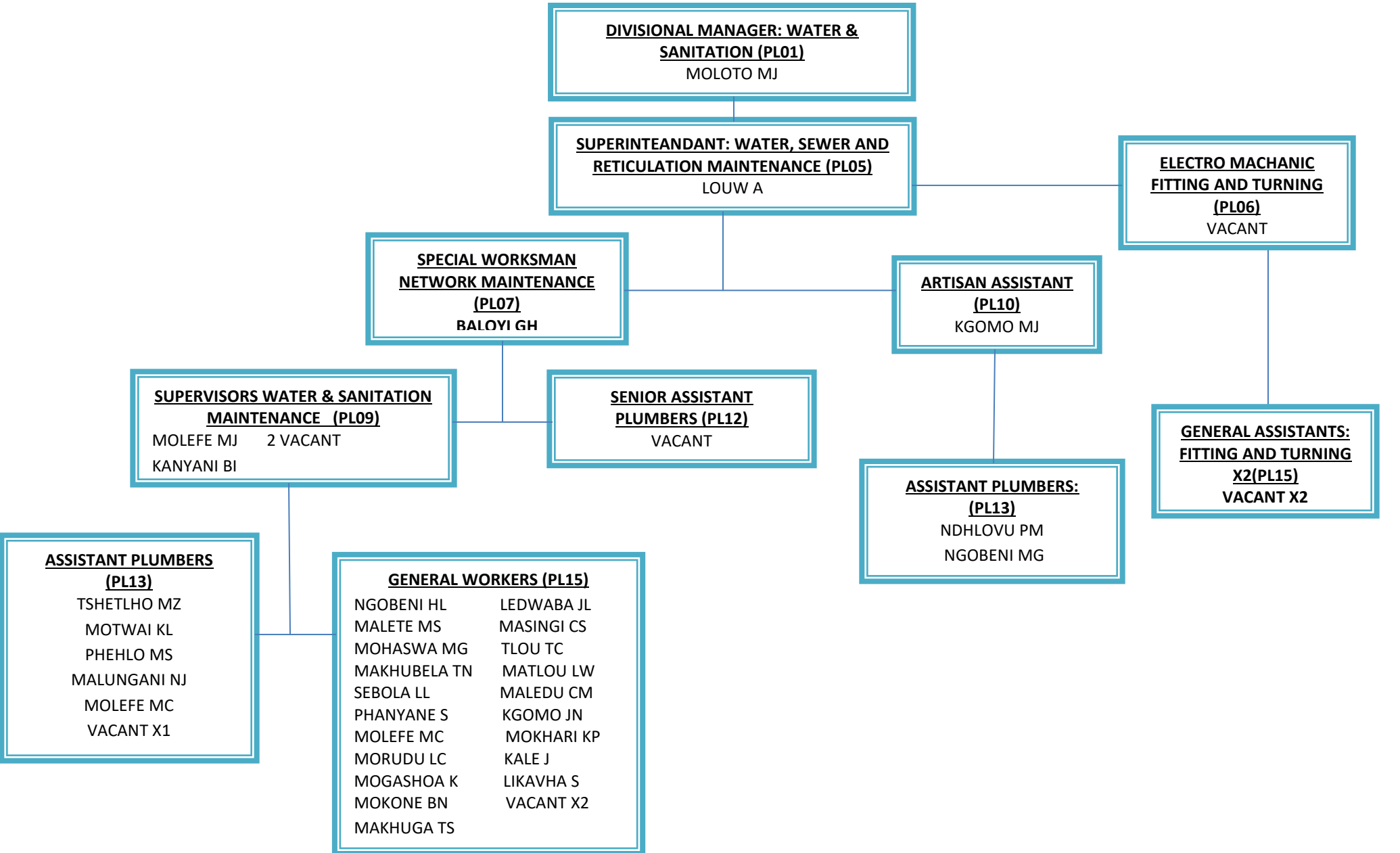
**SENIOR ASSISTANT PLUMBERS (PL12)**  
VACANT

**GENERAL ASSISTANTS: FITTING AND TURNING X2(PL15)**  
VACANT X2

**ASSISTANT PLUMBERS: (PL13)**  
NDHLOVU PM  
NGOBENI MG

**ASSISTANT PLUMBERS (PL13)**  
TSHETLHO MZ  
MOTWAI KL  
PHEHLO MS  
MALUNGANI NJ  
MOLEFE MC  
VACANT X1

**GENERAL WORKERS (PL15)**  
NGOBENI HL      LEDWABA JL  
MALETE MS      MASINGI CS  
MOHASWA MG      TLOU TC  
MAKHUBELA TN      MATLOU LW  
SEBOLA LL      MALEDU CM  
PHANYANE S      KGOMO JN  
MOLEFE MC      MOKHARI KP  
MORUDU LC      KALE J  
MOGASHOA K      LIKAVHA S  
MOKONE BN      VACANT X2  
MAKHUGA TS



**ELECTRICAL DIVISION**

**CHIEF ELECTRICAL ENGINEER**  
HLABANGWANE WT

**TECHNICAL PLANNING**  
**SENIOR ENGINEERING**  
**TECHNICIAN (PL03)**  
VACANT

**ENGINEERING TECHNICIAN (PL04)**  
MAPONYA TM

**OPERATIONS**  
**SUPERINTENDENT (PL05) -**  
**SUBSTATIONS & CABLES**  
MATHIANA J

**ON THE NEXT PAGE**

**OPERATIONS**  
**SUPERINTENDENT (PL05) -**  
**OVERHEADS & STREETLIGHTS**  
MATHE TJ

**CLERK OF WORKS (PL07)**  
NKHUMISHE TM

**STOREMAN (PL 11)**  
THEPE CR  
Proposed x 1

**ELECTRICIAN**  
**OVERHEADS (PL06)**  
MOLOTO TM

**ELECTRICIAN**  
**STREETLIGHTS (PL06)**  
MOATSHE MJ

**ELECTRICIAN**  
**METERING (PL06)**  
HLALETWA M

**LINESMAN (PL 06)**  
VACANT

**SPECIAL WORKSMAN**  
**(PL07)**  
LEBELO ST

**CRANE TRUCK**  
**OPERATOR/ DRIVER**  
**(PL12)**

**ELECTRICAL**  
**ASSISTANT (PL13)**  
MOOKA NA

**SENIOR STREETLIGHT**  
**ATTENDANT (PL09)**  
MAKWESA LL

**ELECTRICAL**  
**ASSISTANT (PL13)**  
MADIKANE SM

**ELECTRICAL**  
**ASSISTANT (PL 13)**  
MOLEBATSI SK

**SPECIAL WORKSMAN**  
**ASSISTANT (PL13)**  
MARIMA I

**GENERAL WORKERS**  
**X2 (PL15)**  
SELAMOLELA DK  
NOBELA TS

**STREETLIGHT ATTENDANTS**  
**X2 (PL10)**  
MAKHUBELE L  
VACANT X1

**STREETLIGHT**  
**ASSISTANT X2 (PL13)**  
MOLOKWANE TLJ

**GENERAL WORKER**  
**(PL15)**  
NGOANA V

**GENERAL WORKER**  
**(PL15) X 2**  
SITHOLE AS

**GENERAL WORKER**  
**(PL 15)**  
VACANT

**GENERAL WORKER**  
**(PL15)**  
PROPOSED

**GENERAL WORKER**  
**(PL15)**  
NDHLOVU RD

**ELECTRICAL DIVISION**

**CHIEF ELECTRICAL  
ENGINEER (CONTRACT)**  
HLABANGWANI TW

**OPERATIONS  
SUPERINTENDENT (PL05) -  
SUBSTATIONS & CABLES**  
MATHIANA J

**ELECTRICIANS  
Substations (PL06)**  
NEMAKHAVHANI KZ

**ELECTRICIANS  
CABLES (PL06)**

**ELECTRICIAN  
METERING (PL06)**  
HLALETHWA M

**SENIOR CABLE  
JOINTER (PL05)**  
PROPOSED

**SPECIAL WORKSMAN  
X2 (PL07)**  
NKUNA MH  
MOATSHE JM

**GRANE TRUCK  
OPERATOR/DRIVER  
(PL12)**  
VACANT

**ELECTRICAL  
ASSISTANT (PL13)**  
VACANT

**ELECTRICAL  
ASSISTANT (PL13)**  
VACANT

**ELECTRICAL  
ASSISTANT (PL13)**  
VACANT

**CABLE JOINTER  
(PL06)**  
SEEMA LJ

**SPECIAL WORKSMAN  
ASSISTANT X2 (PL15)**  
BALOYI MH  
KHOZA PN

**GENERAL WORKER  
(PL15)**  
LUVHENGU MJ

**GENERAL WORKER  
(PL15)**  
VACANT

**GENERAL WORKER  
(PL15)**  
VACANT

**CABLE JOINTER  
ASSISTANT X2 (PL13)**  
MAKHUBELA HA  
VACANT

**GENERAL WORKER X2  
(PL15)**  
MPETE E  
VACANT

**GENERAL WORKER X2  
(PL15)**  
MAKHETHI MM  
MAKOBELA LS

**GENERAL  
WORKER (PL15)**  
SEOKETSA PS

# **SOCIAL & COMMUNITY SERVICES ORGANOGRAM**

**MANAGER: SOCIAL & COMMUNITY SERVICES**  
VACANT

**PERSONAL ASSISTANT (PL07)**  
VACANT

**DIVISIONAL MANAGER:**  
**CLEANSING & WASTE**  
**MANAGEMENT (PL01)**  
MOHLALA A

**DIVISIONAL MANAGER:**  
**PUBLIC SAFETY (PL01)**  
MONARE I

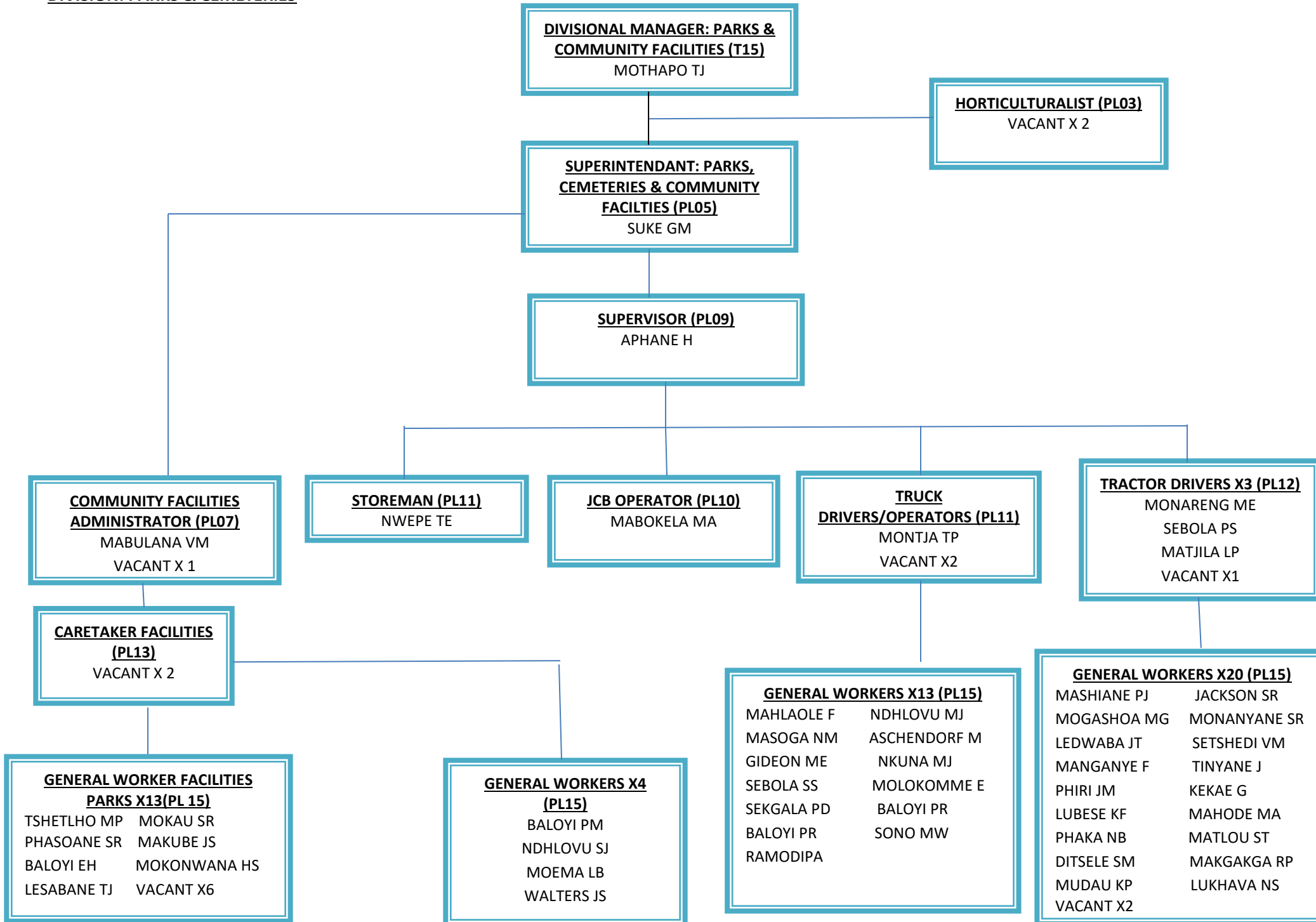
**DIVISIONAL MANAGER:**  
**LICENSING &**  
**REGISTRATION (PL01)**  
MATWALANA LT

**DIVISIONAL MANAGER:**  
**SPORTS ARTS AND**  
**CULTURE (PL01)**  
RABOROLO DT

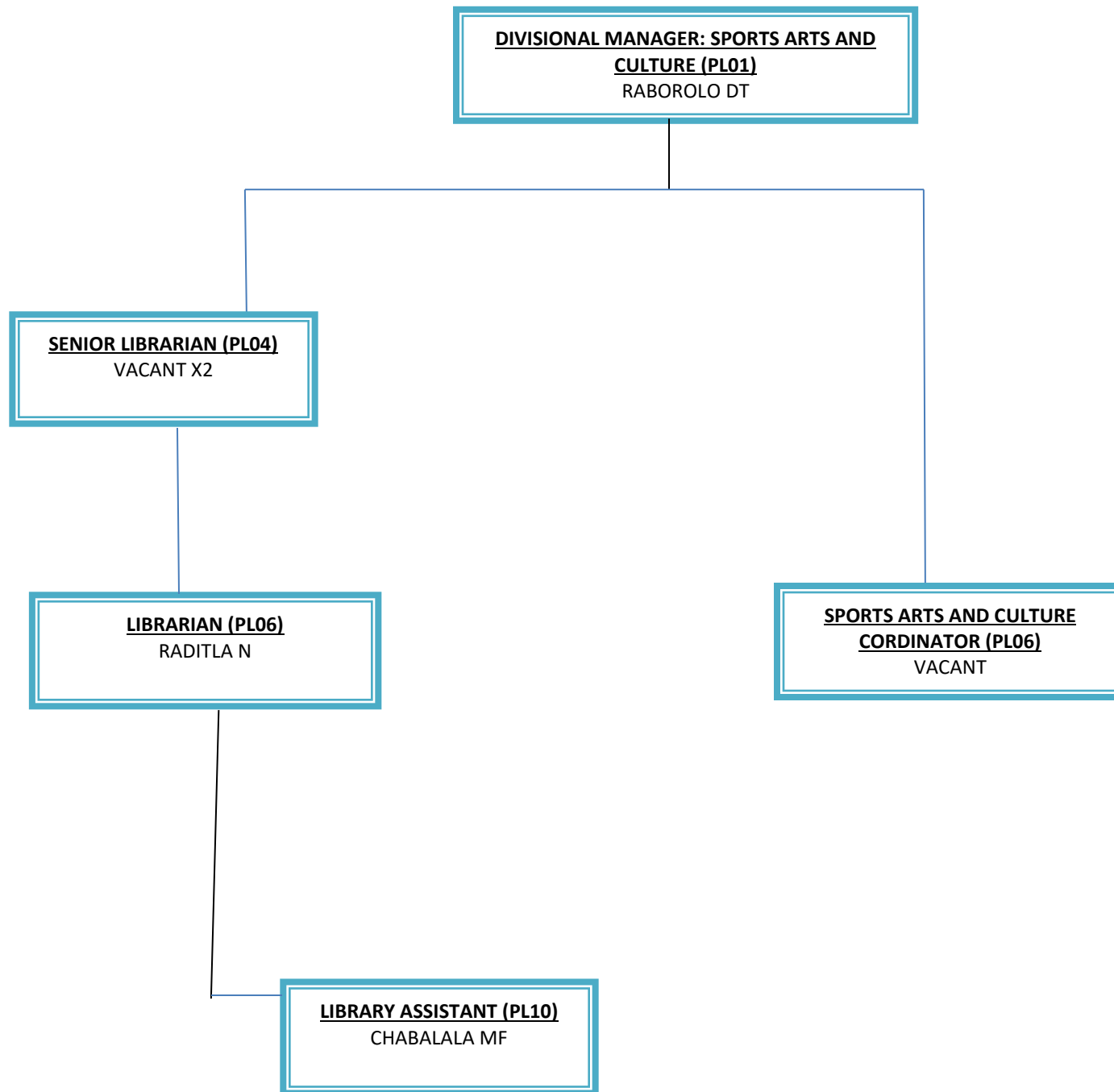
**DIVISIONAL MANAGER:**  
**PARKS AND COMMUNITY**  
**FACILITIES (PL01)**  
MOTHAPO TJ



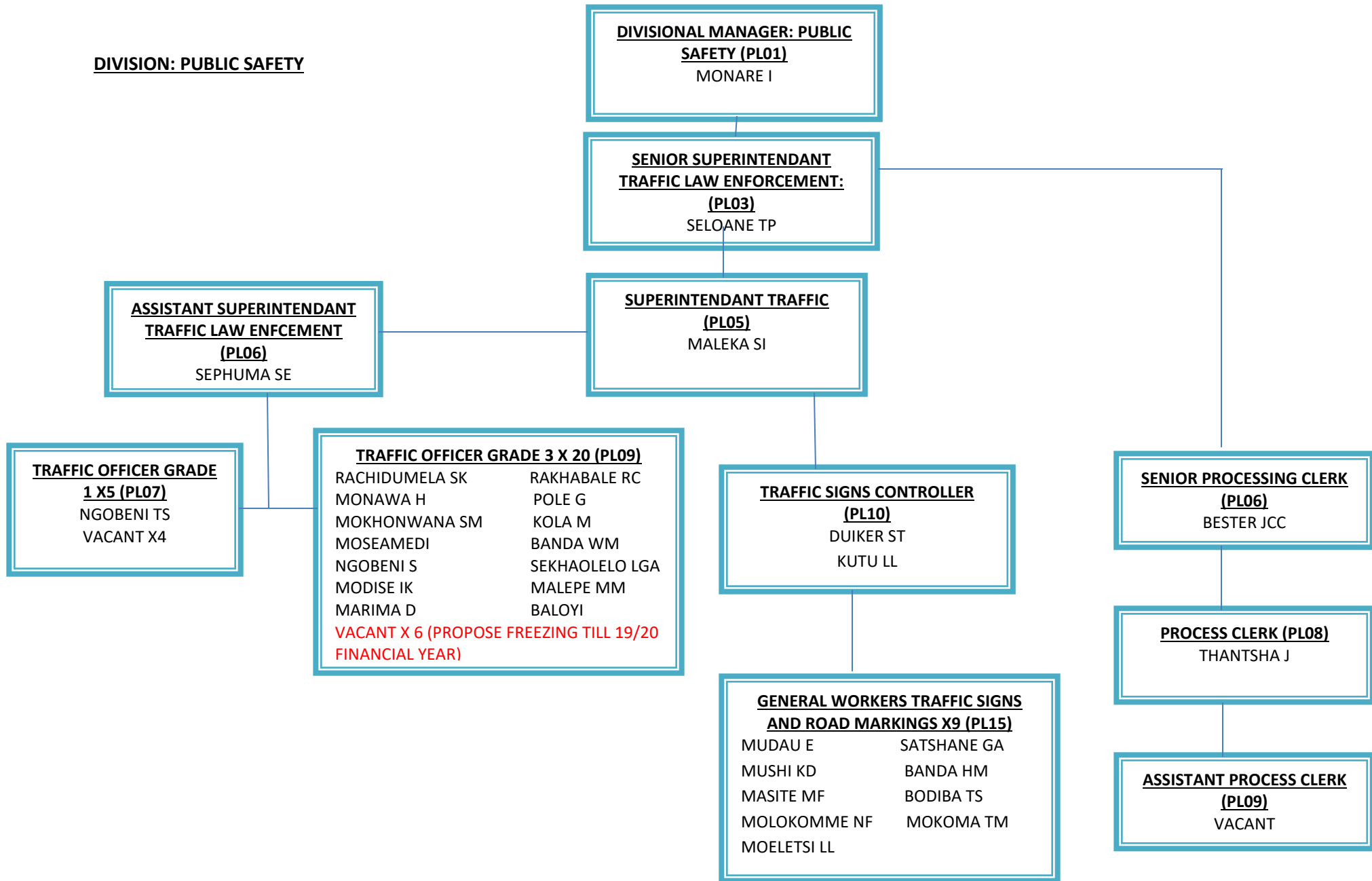
**DIVISION: PARKS & CEMETERIES**



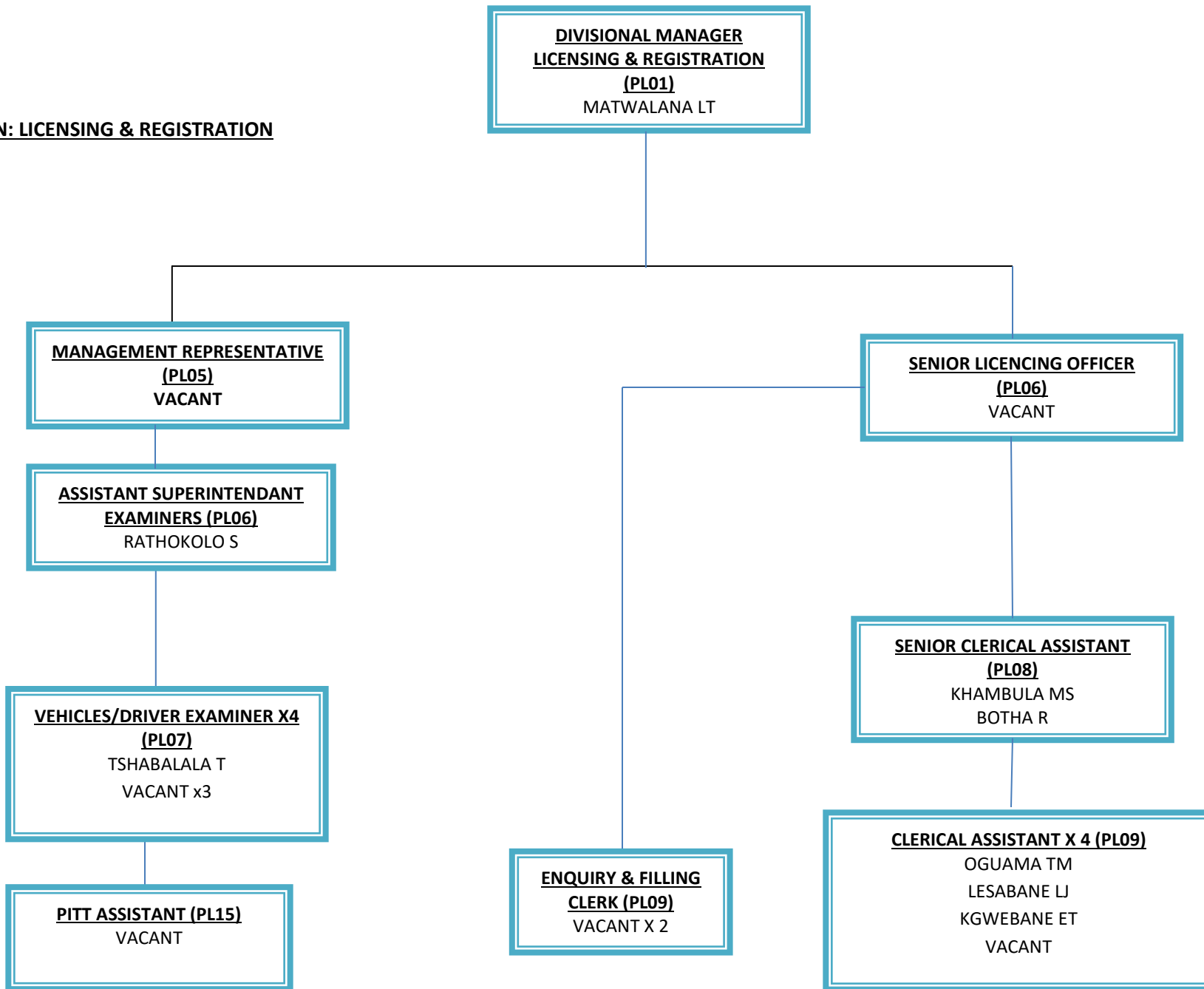
**DIVISION: SPORTS ARTS AND CULTURE**



**DIVISION: PUBLIC SAFETY**



**DIVISION: LICENSING & REGISTRATION**



**DIVISIONAL MANAGER**  
**LICENSING & REGISTRATION**  
**(PL01)**  
MATWALANA LT

**MANAGEMENT REPRESENTATIVE**  
**(PL05)**  
VACANT

**ASSISTANT SUPERINTENDANT**  
**EXAMINERS (PL06)**  
RATHOKOLO S

**VEHICLES/DRIVER EXAMINER X4**  
**(PL07)**  
TSHABALALA T  
VACANT x3

**PITT ASSISTANT (PL15)**  
VACANT

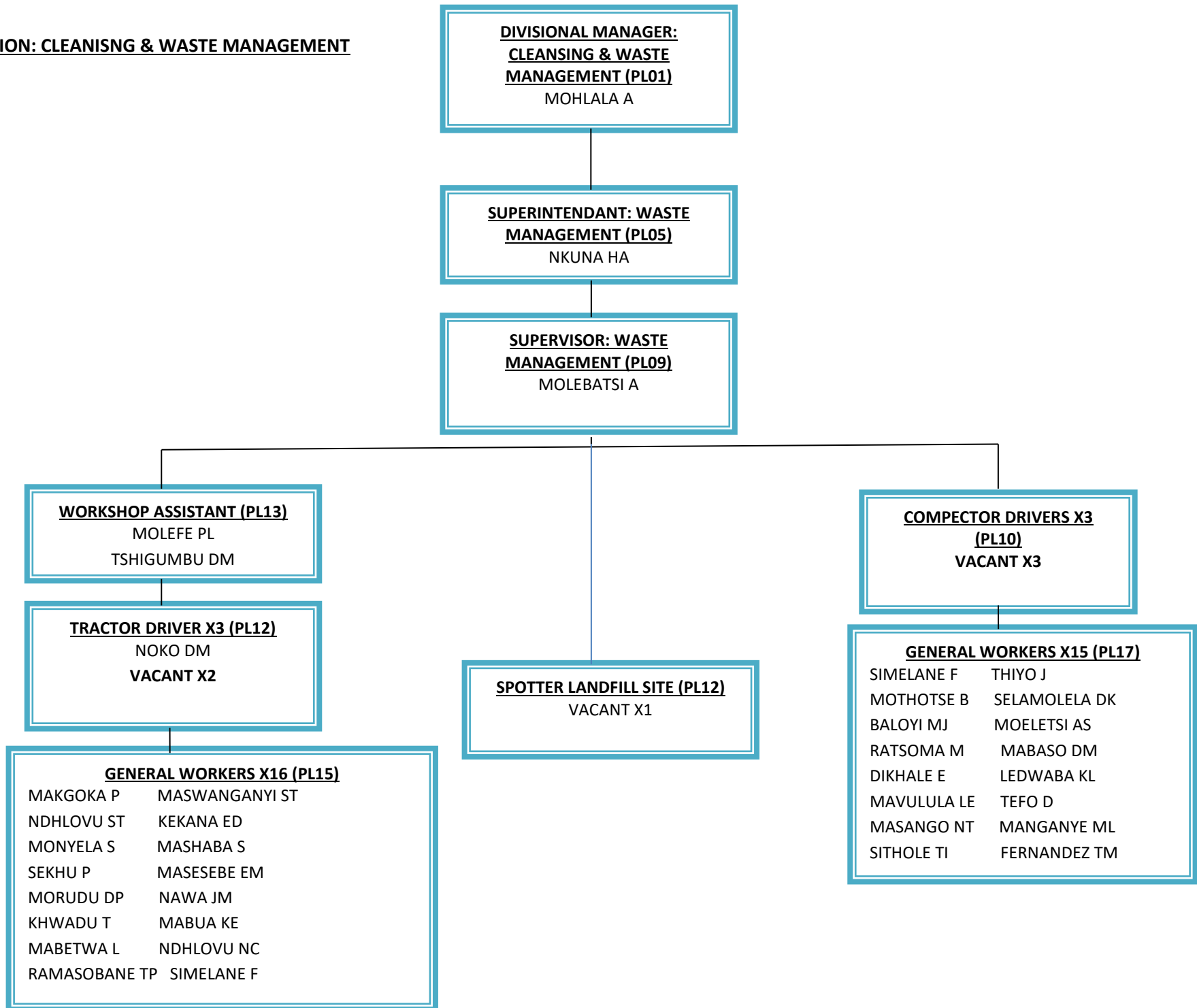
**SENIOR LICENSING OFFICER**  
**(PL06)**  
VACANT

**SENIOR CLERICAL ASSISTANT**  
**(PL08)**  
KHAMBULA MS  
BOTH A R

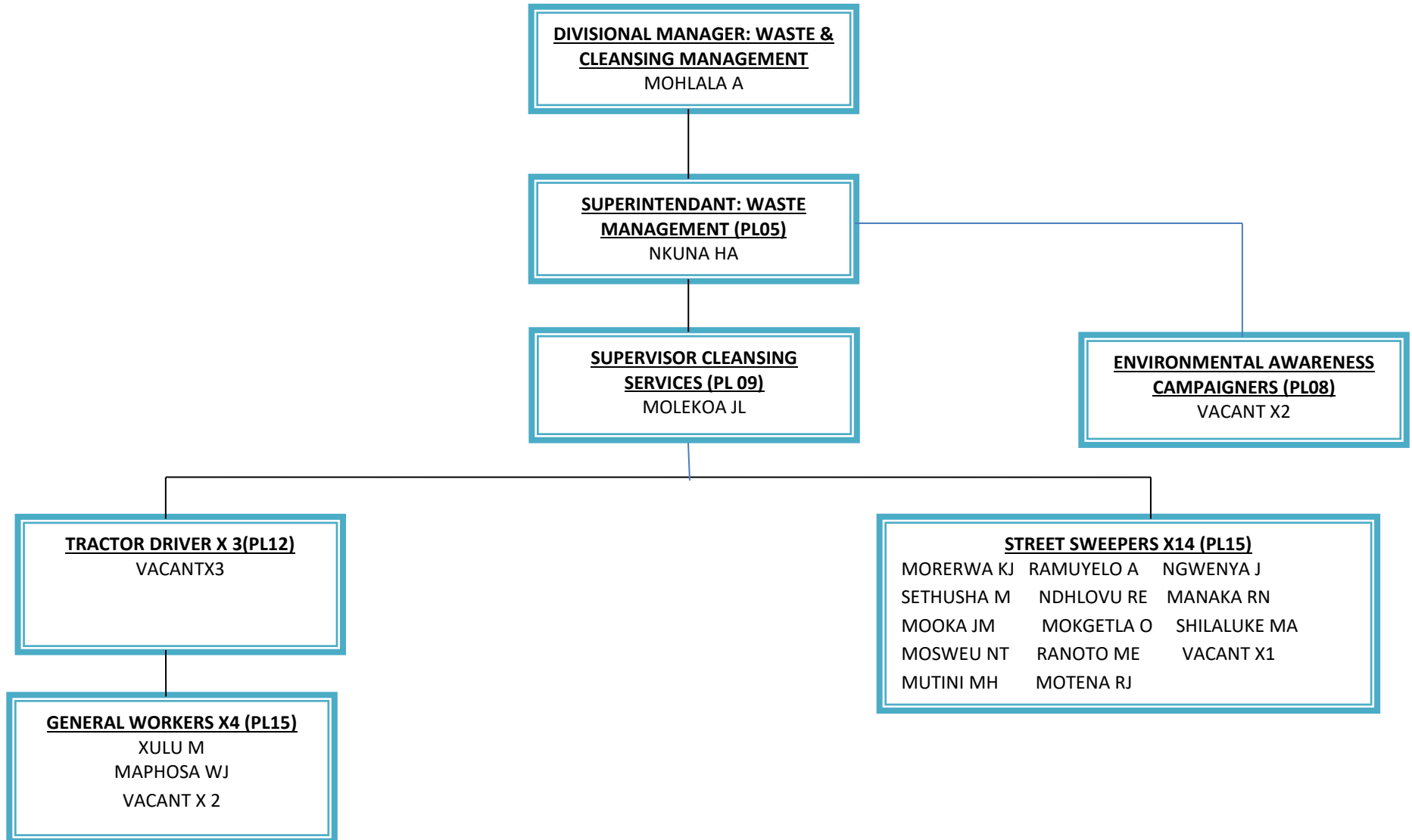
**CLERICAL ASSISTANT X 4 (PL09)**  
OGUAMA TM  
LESABANE LJ  
KGWEBANE ET  
VACANT

**ENQUIRY & FILLING**  
**CLERK (PL09)**  
VACANT X 2

**DIVISION: CLEANISNG & WASTE MANAGEMENT**

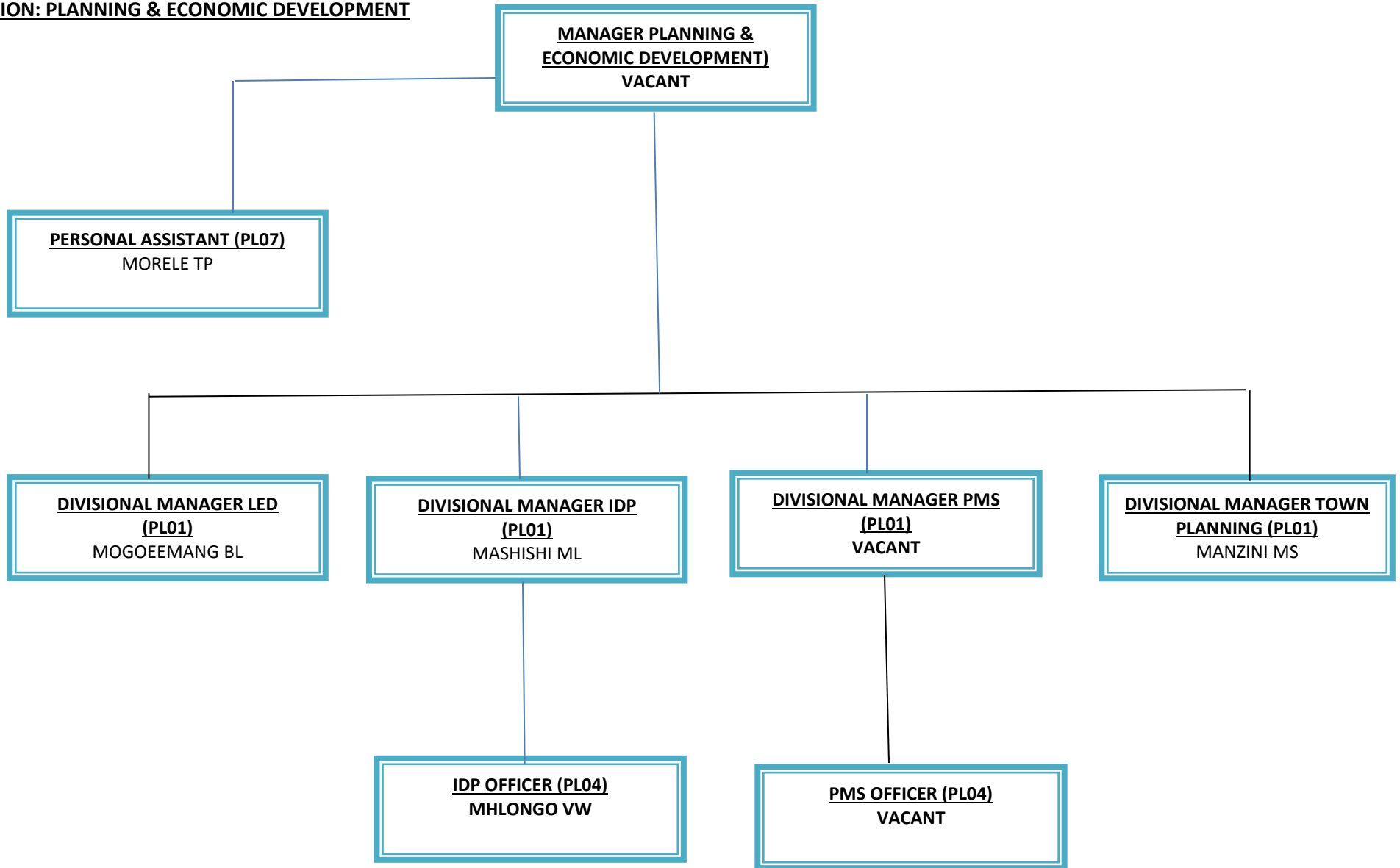


**DIVISION: CLEANSING & WASTE MANAGEMENT (CLEANSING)**



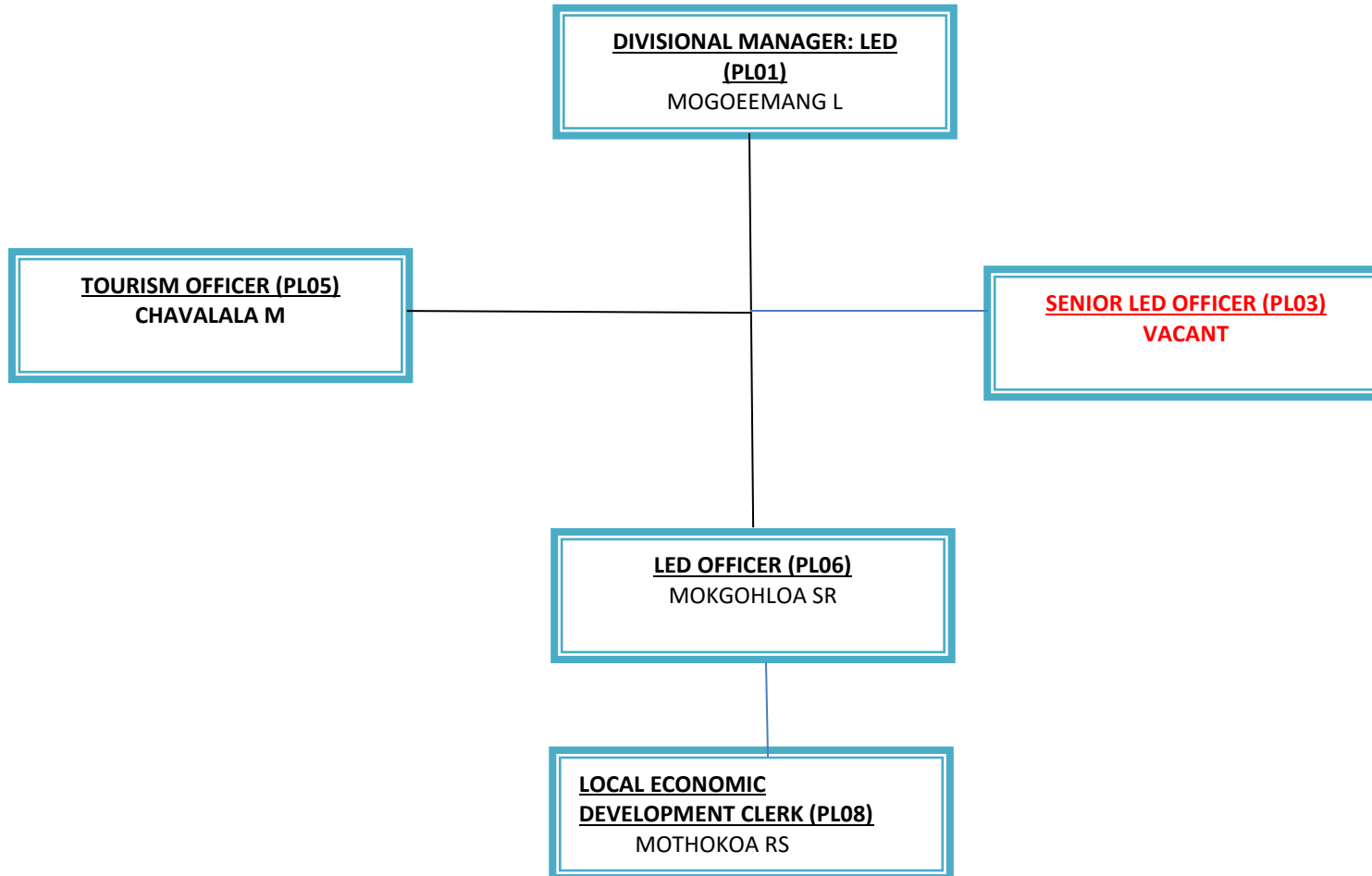
# **PLANNING & ECONOMIC OFFICE ORGANOGRAM**

**DIVISION: PLANNING & ECONOMIC DEVELOPMENT**

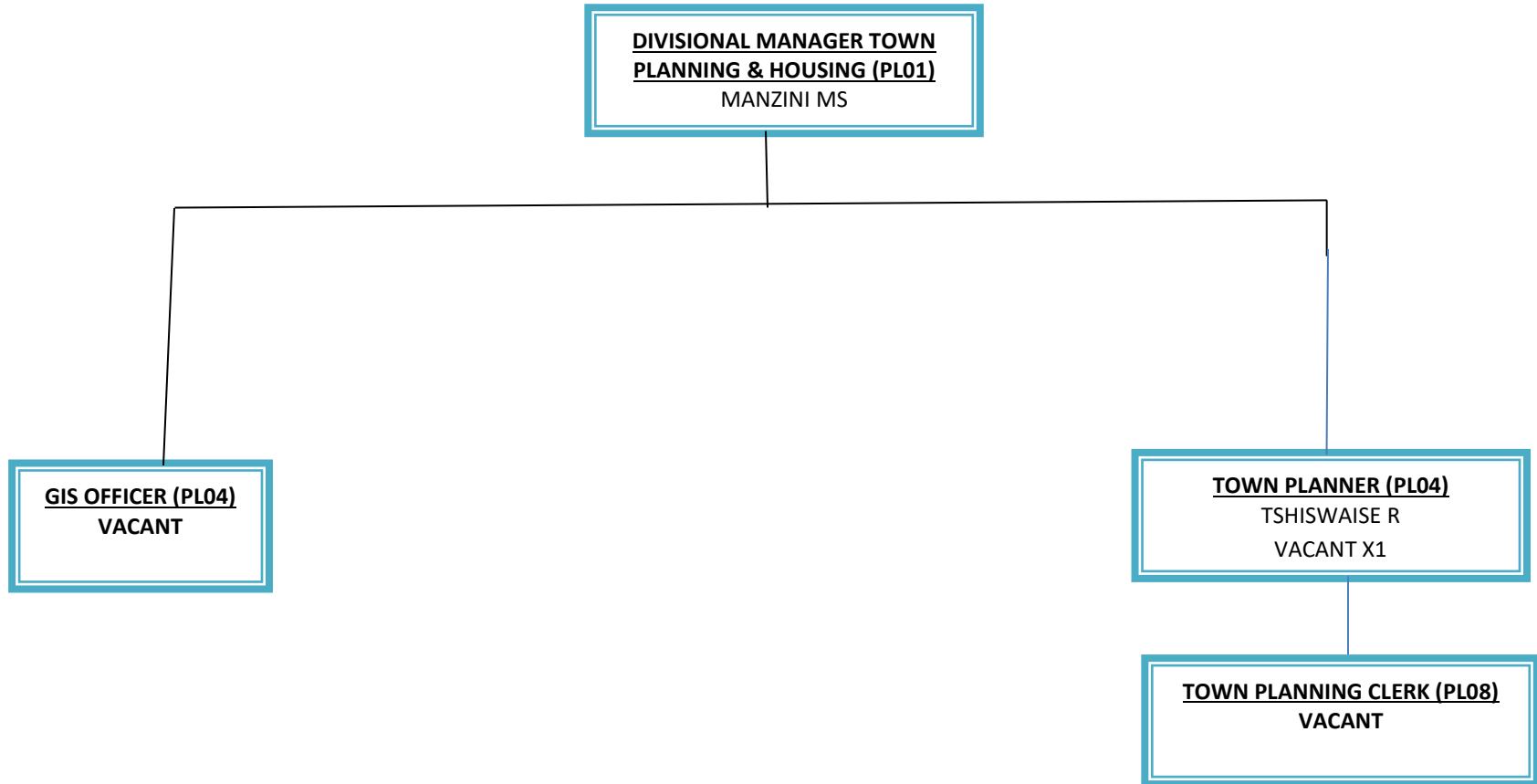




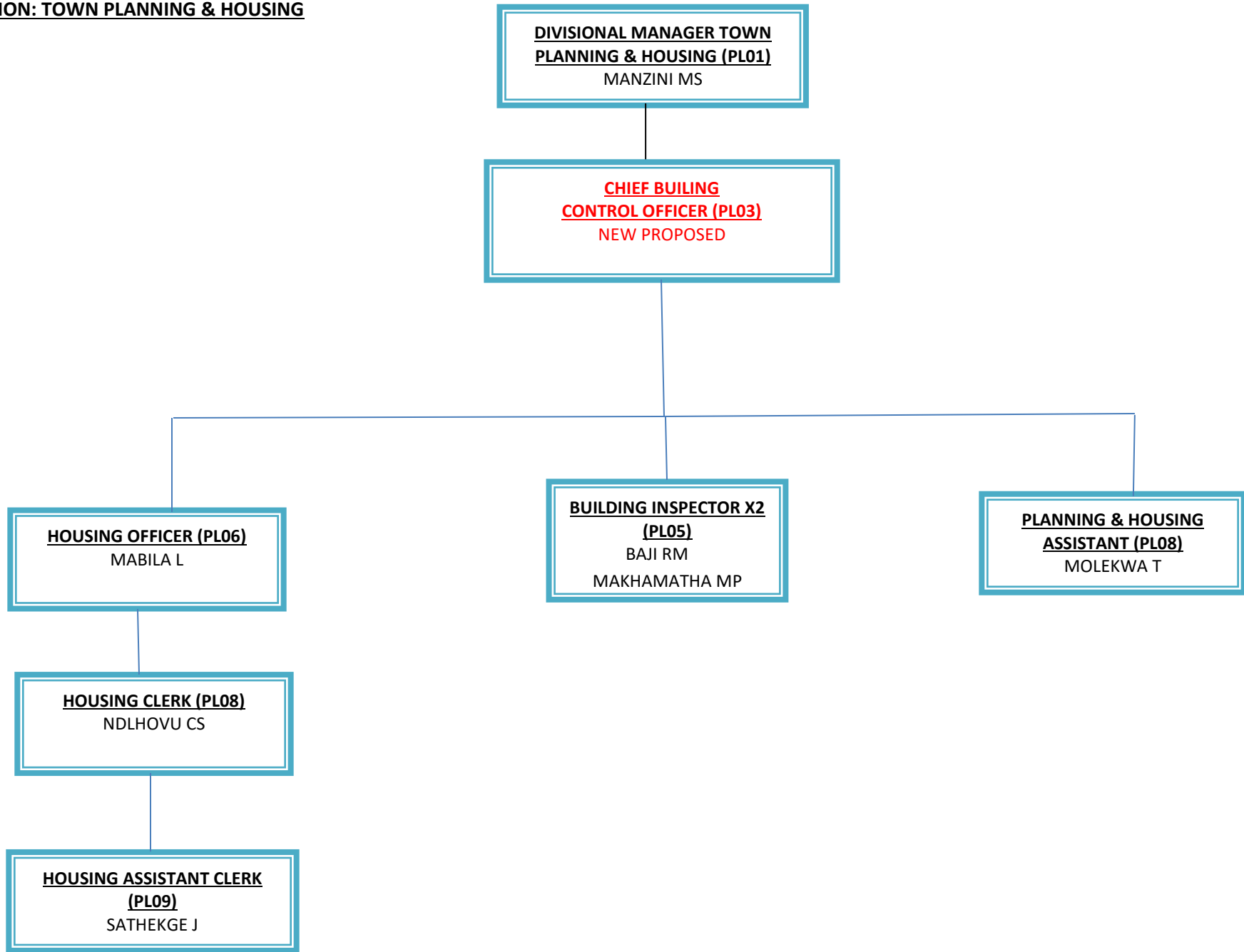
**DIVISION: LOCAL ECONOMIC DEVELOPMENT**



**DIVISION: TOWN PLANNING & HOUSING**

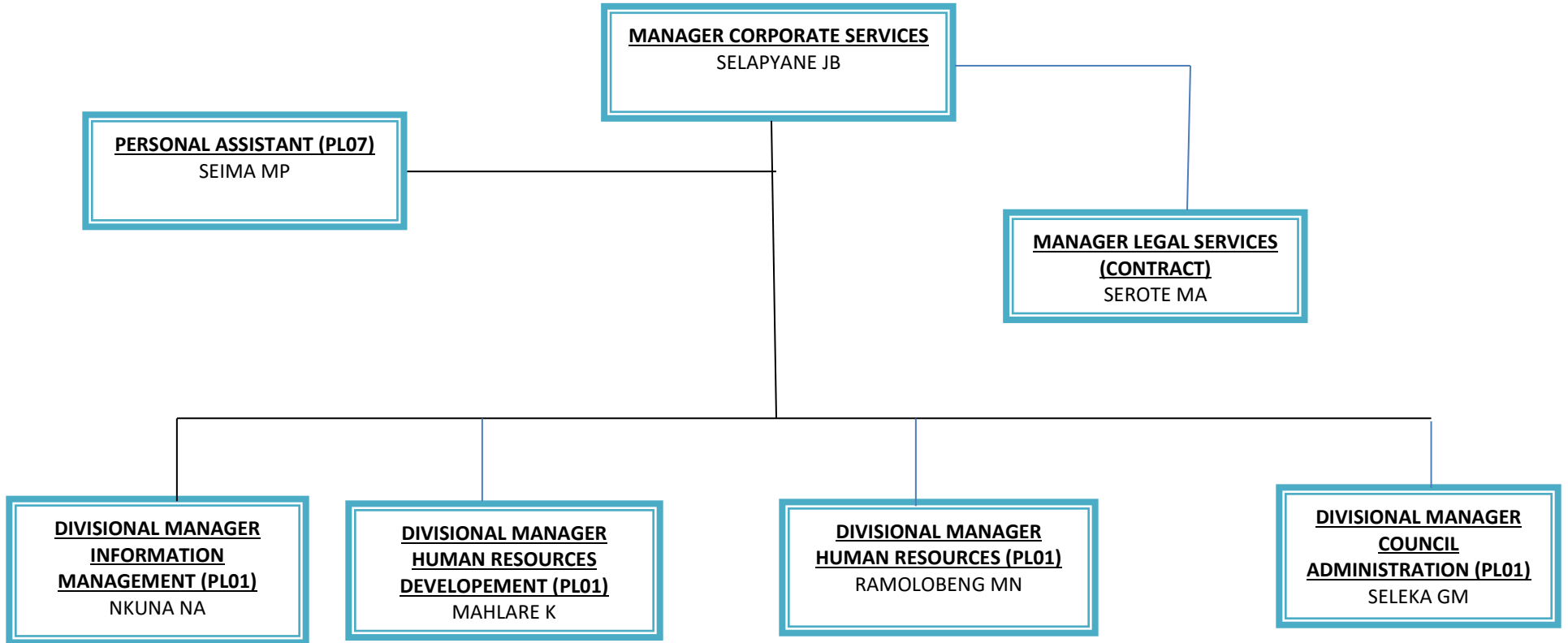


**DIVISION: TOWN PLANNING & HOUSING**

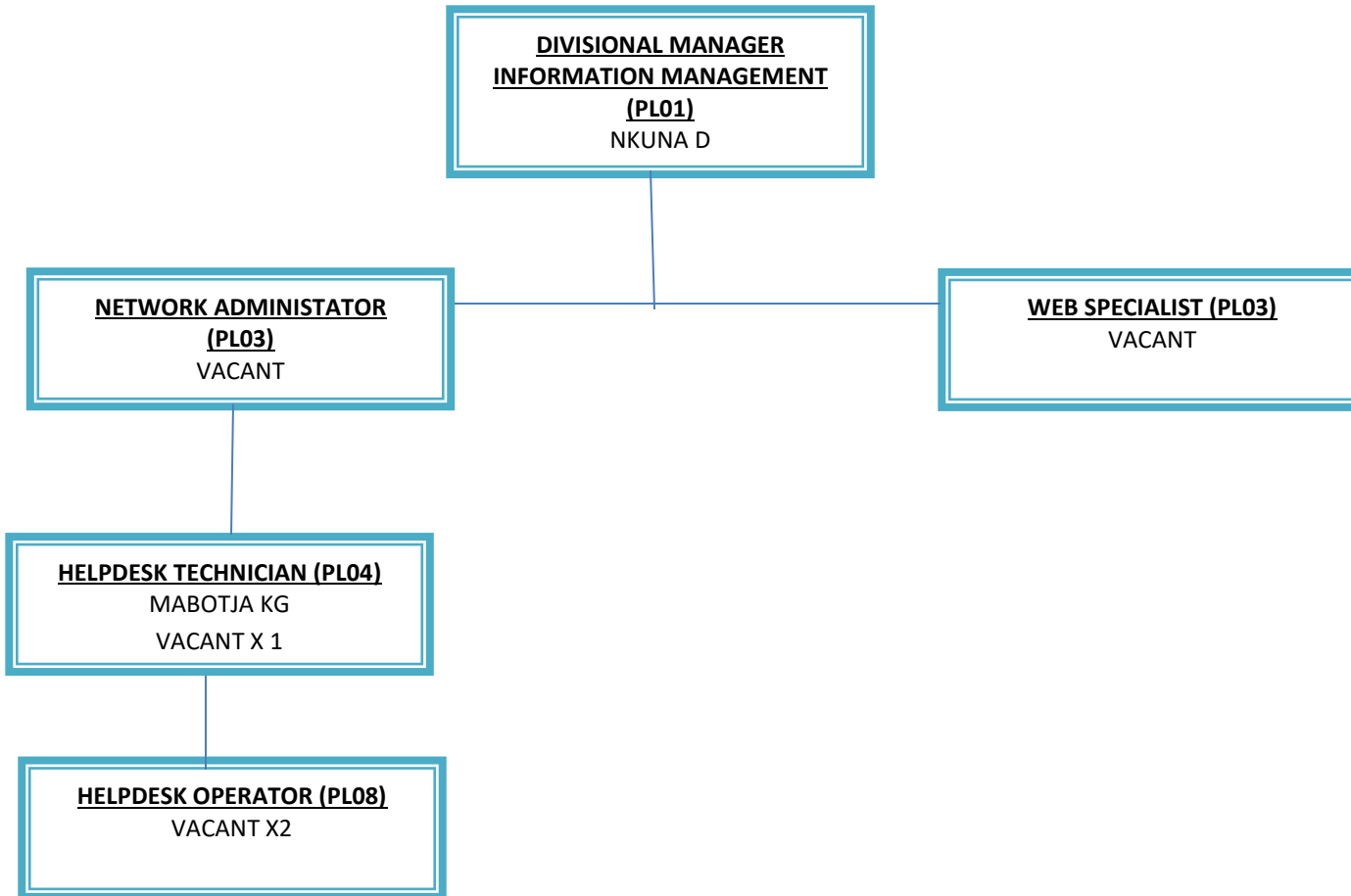


# **OFFICE OF CORPORATE ORGANOGRAM**

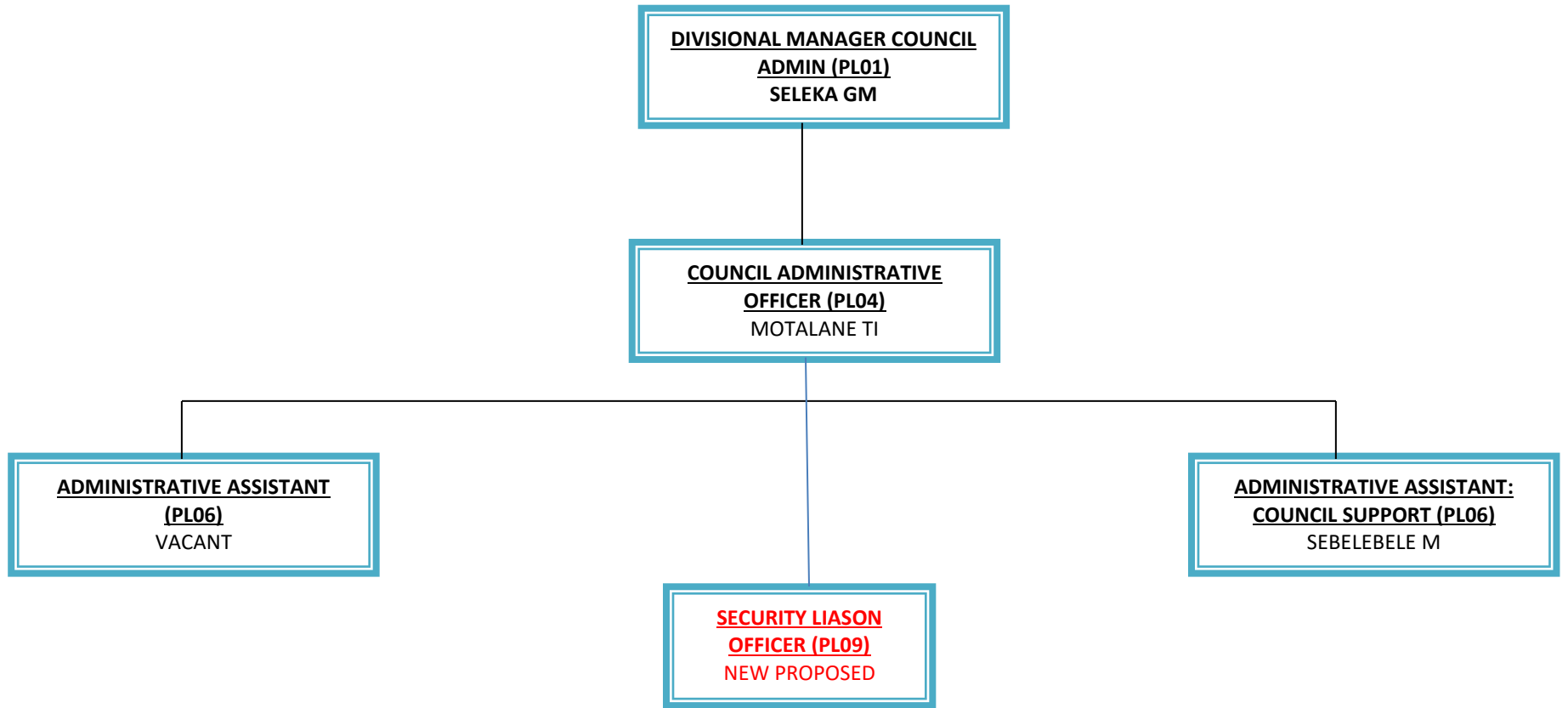
**DEPARTMENT: CORPORATE SERVICES**



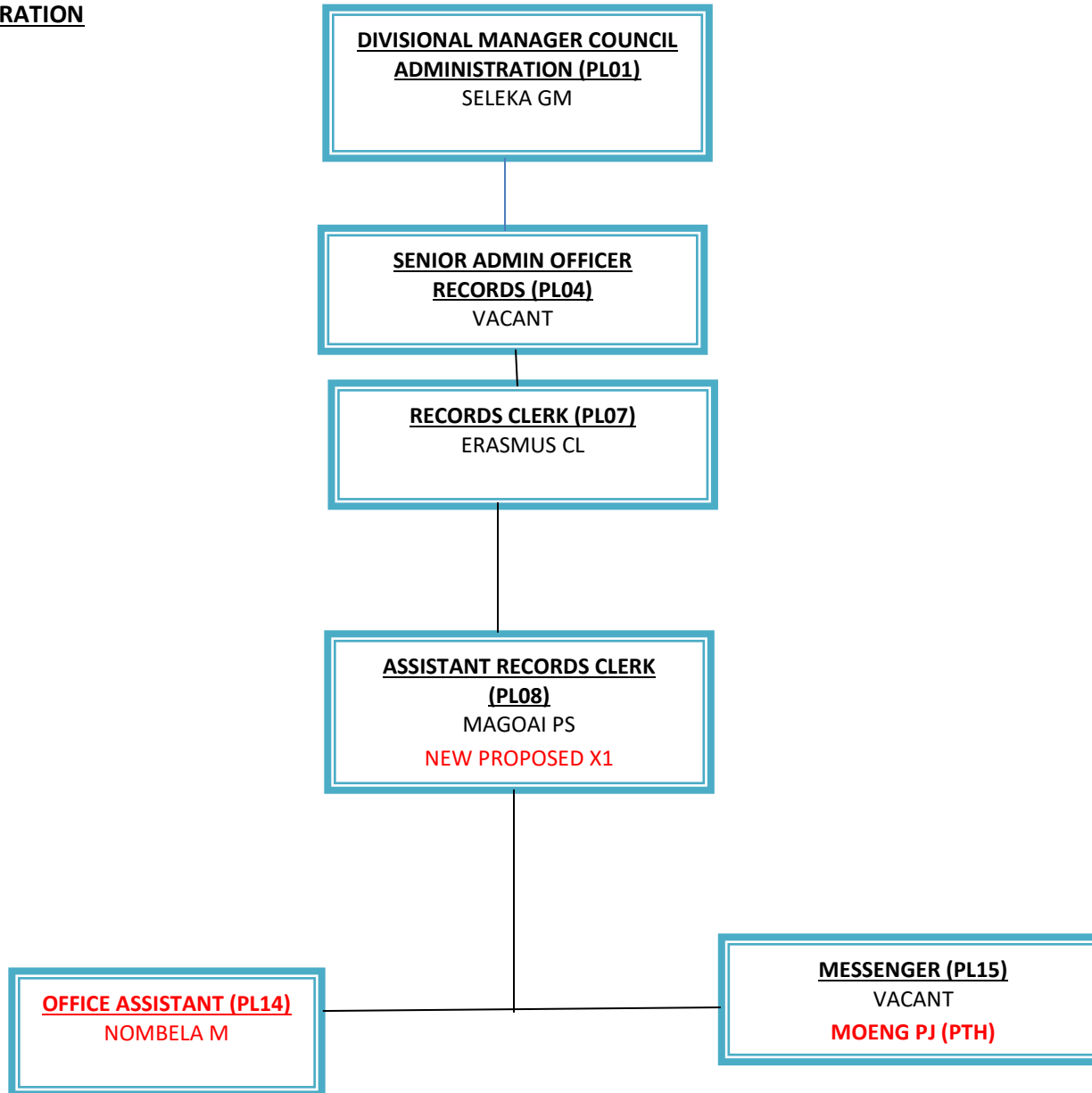
INFROMATION TECHNOLOGY DIVISION



**DIVISION: COUNCIL ADMIN**



**DIVISION: COUNCIL ADMINISTRATION**





**DIVISION COUNCIL ADMINISTRATION (CONTINUED)**

**DIVISIONAL MANAGER COUNCIL  
ADMINISTRATION (PL01)**  
SELEKA GM

**COUNCIL ADMIN OFFICER (PL04)**  
MOTALANE TI

**SUPERVISOR CLEANSING  
SERVICES (PL09)**  
DLAMINI MG

**OFFICE CLEANERS X15 (PL15)**

THULE NE	MOTHOKWA LM
MOSELANE DE	NGUBENI SR
BALOYI LV	MAPHRUMELA NL
SATHEGKE MR	HASSAN RJ
NGHLOVU RJ	MATSIMBI FV
MOOKA G	MOTSHABI J
MOLEKWA SS	TLHOKA S
NDHLOVU SM	MONANYANE J

**DIVISION: HUMAN RESOURCES MANAGEMENT**

**DIVISIONAL MANAGER HUMAN  
RESOURCES (PL01)**  
RAMOLOBENG MN



**HUMAN RESOURCES  
OFFICER (PL04)**  
MAHESO TE

**SALARY ADMIN OFFICER  
(PL04)**  
SEIMA A

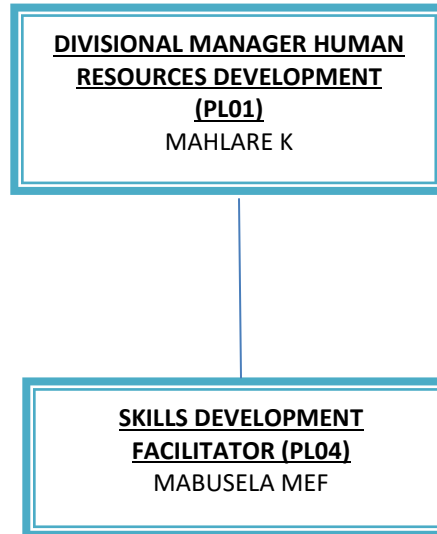
**EAP PRACTITIONER (PL04)**  
SEANEGO E

**ORGANISATIONAL DEVELOPMENT  
/WORKSTUDY OFFICER (PL04)**  
VACANT

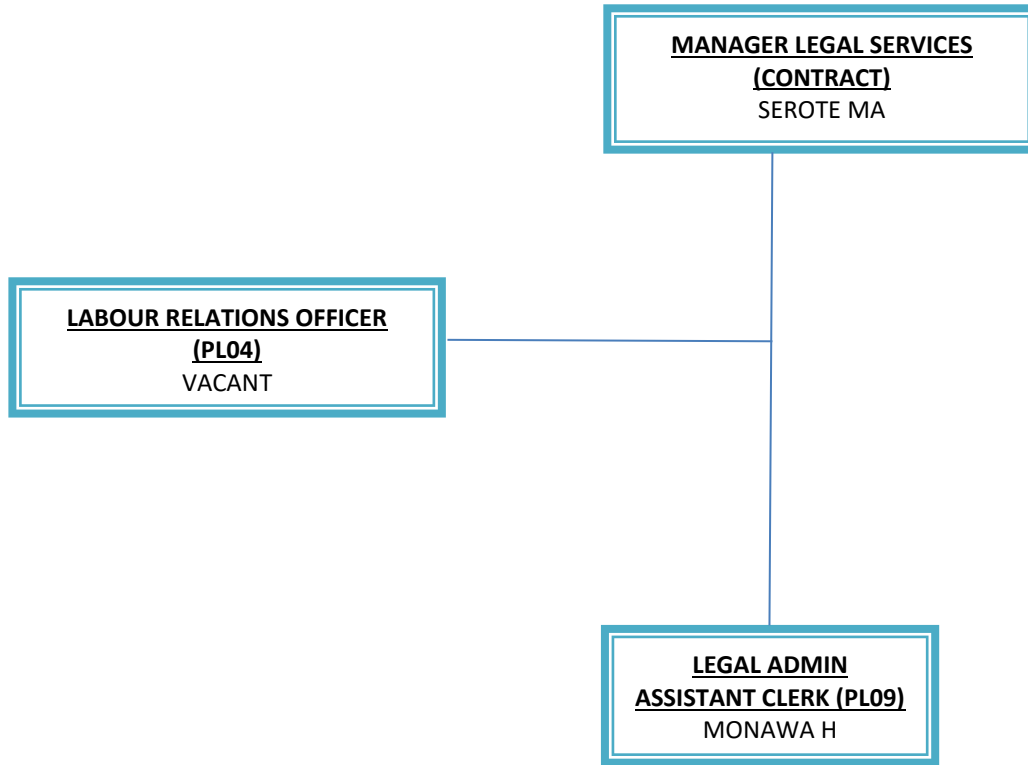
**HUMAN RESOURCES  
CLERK (PL08)**  
SENOA ME

**OCCUPATIONAL HEALTH  
& SAFETY (PL05)**  
DLAMINI HT

**DIVISION: HUMAN RESOURCES DEVELOPMENT**

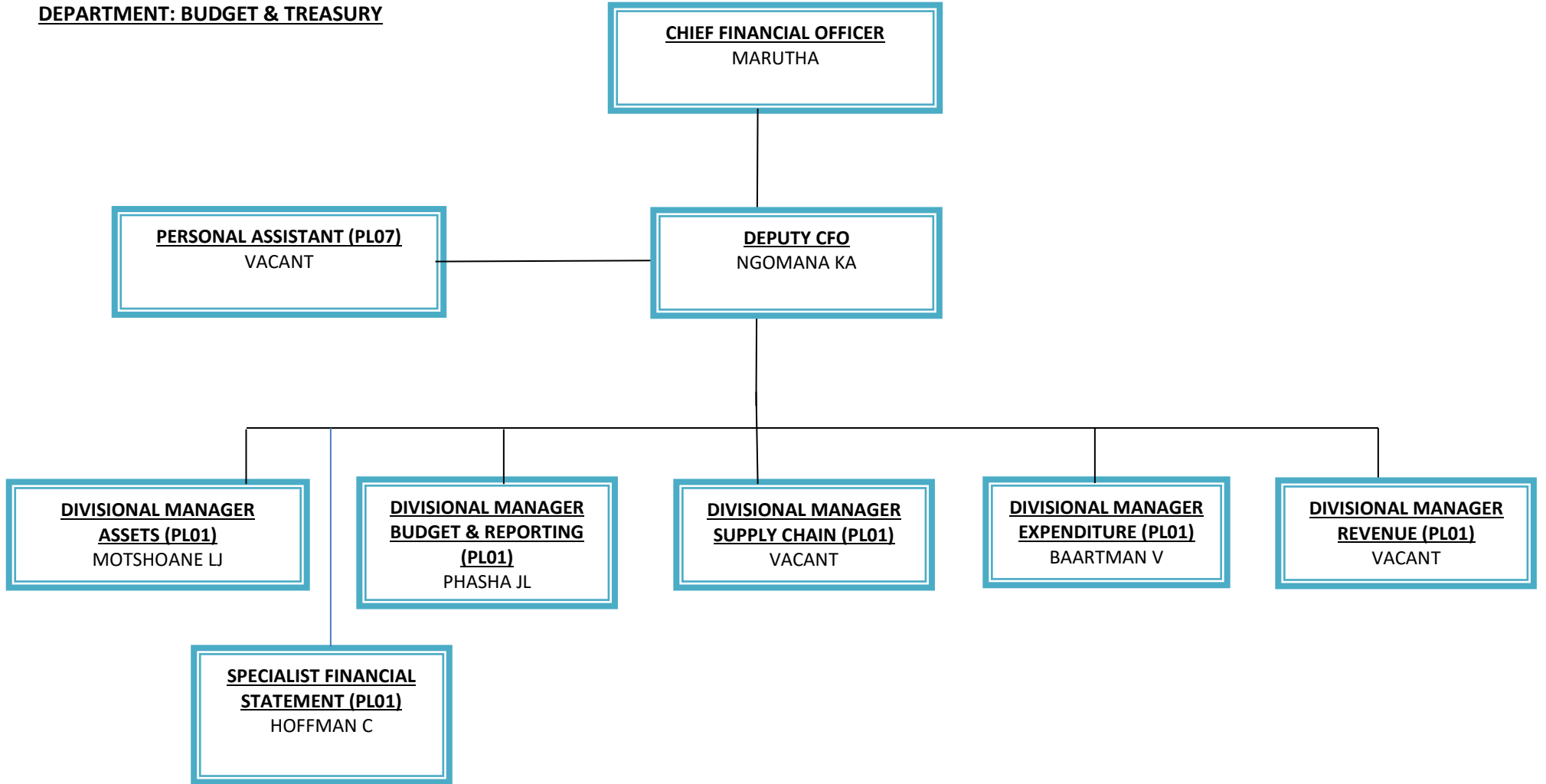


CORPORATE SERVICES

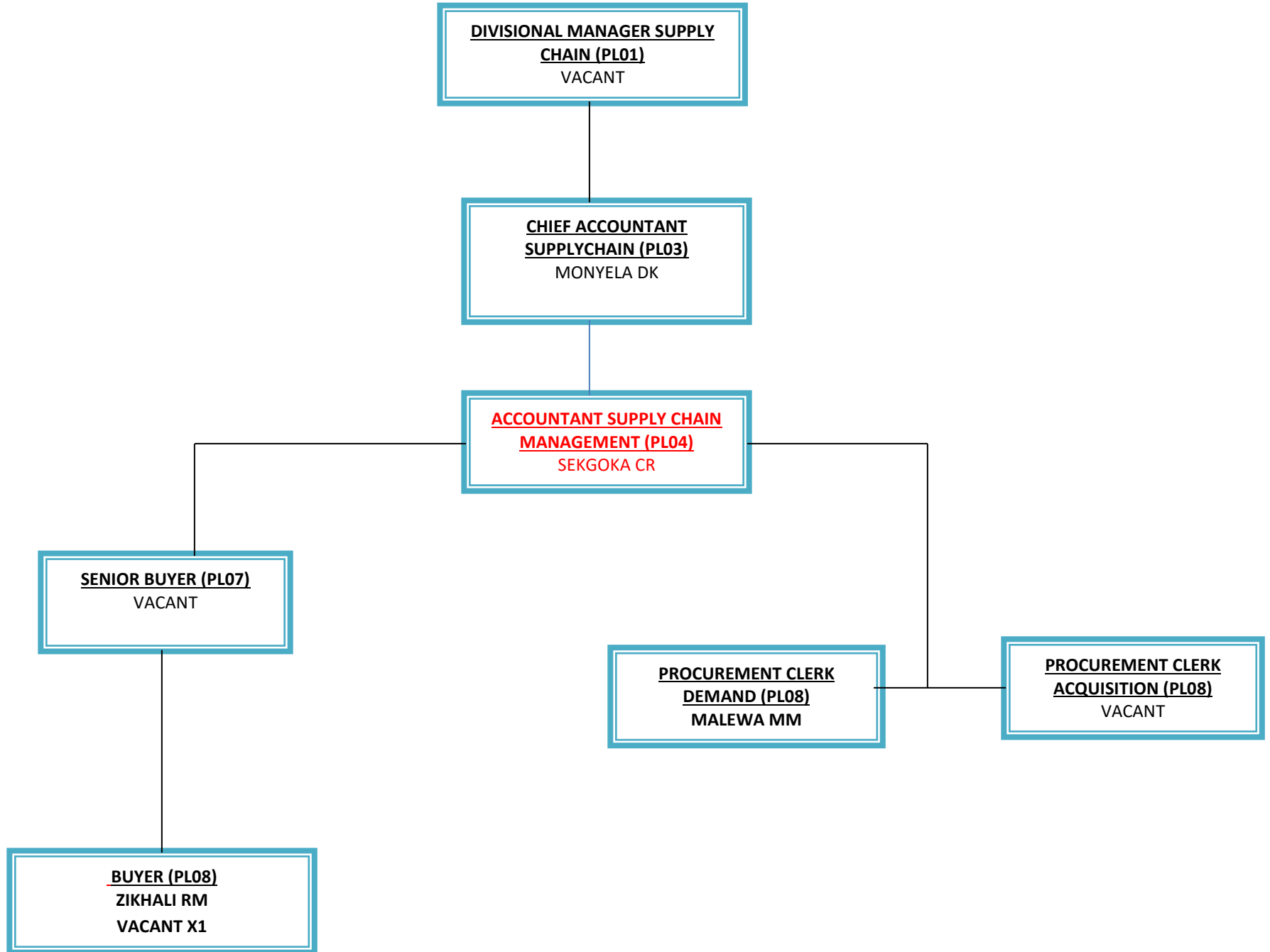


# **BUDGET & TREASURY ORGANOGRAM**

**DEPARTMENT: BUDGET & TREASURY**



**DIVISION: SUPPLY CHAIN**



**DIVISION: EXPENDITURE**

**DIVISIONAL MANAGER**  
**EXPENDITURE (PL01)**  
BAARTMAN V

**CHIEF ACCOUNTANT**  
**EXPENDITURE (PL03)**  
MHLAMAZANA A

**ACCOUNTANT CREDITORS (PL04)**  
VACANT

**ACCOUNTANT EXPENDITURE**  
**(PL04)**  
KHUMBANE MC

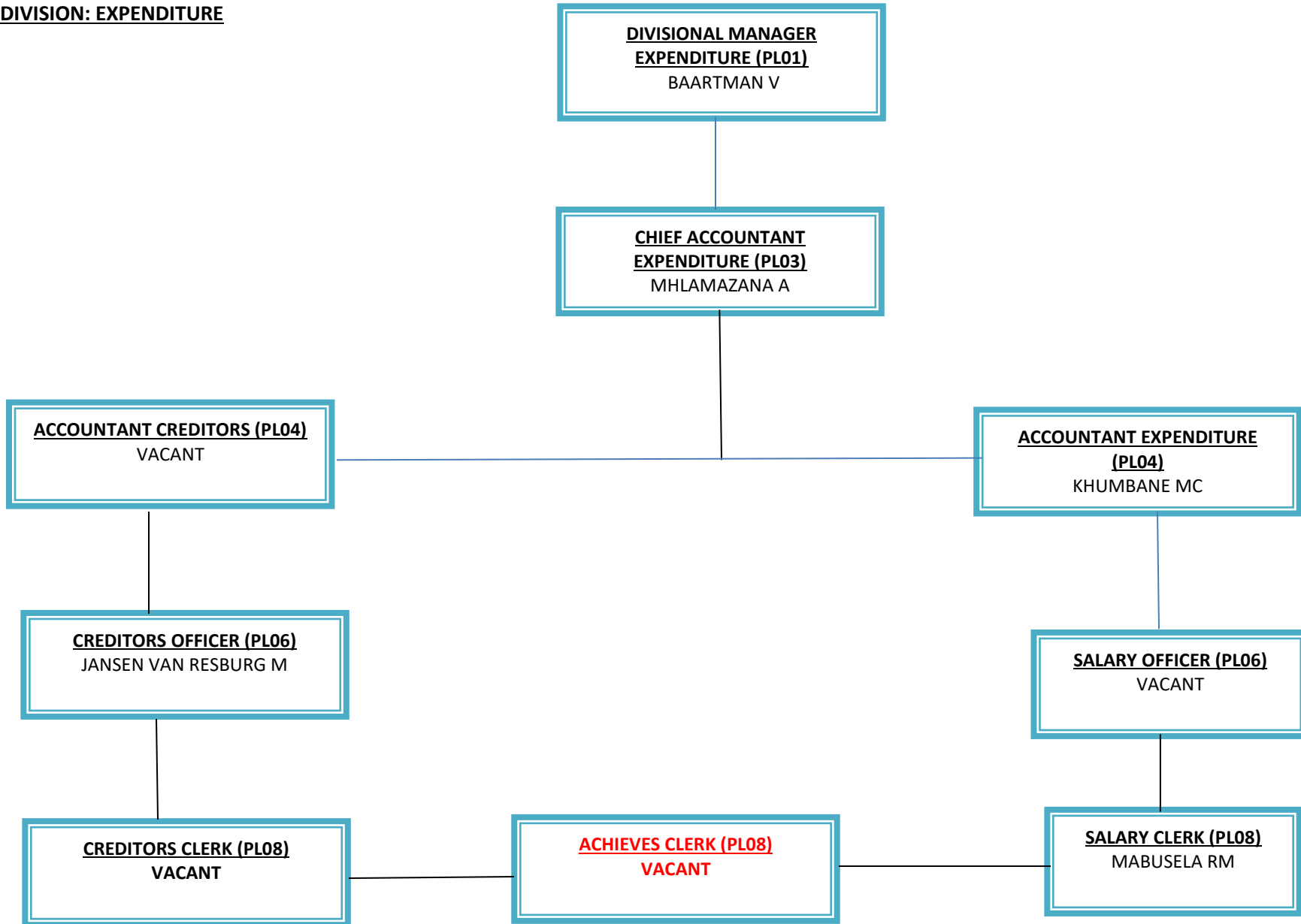
**CREDITORS OFFICER (PL06)**  
JANSEN VAN RESBURG M

**SALARY OFFICER (PL06)**  
VACANT

**CREDITORS CLERK (PL08)**  
VACANT

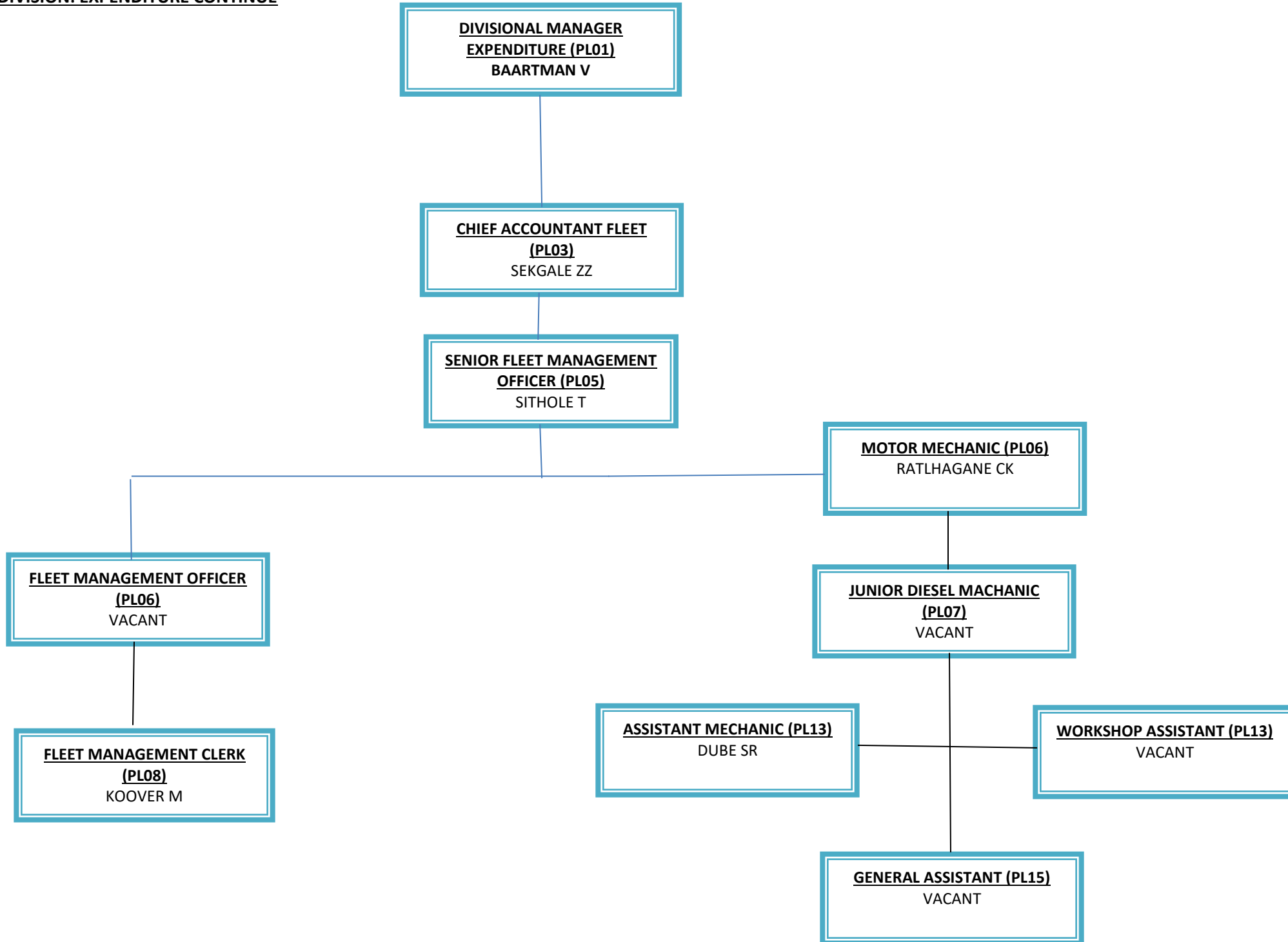
**ACHIEVES CLERK (PL08)**  
VACANT

**SALARY CLERK (PL08)**  
MABUSELA RM

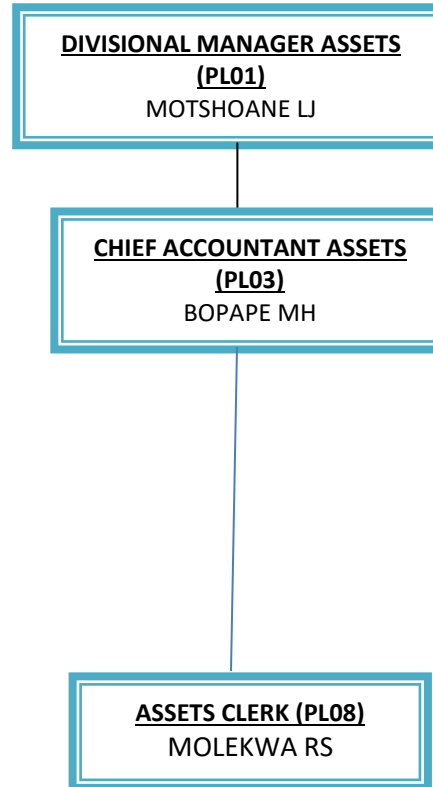




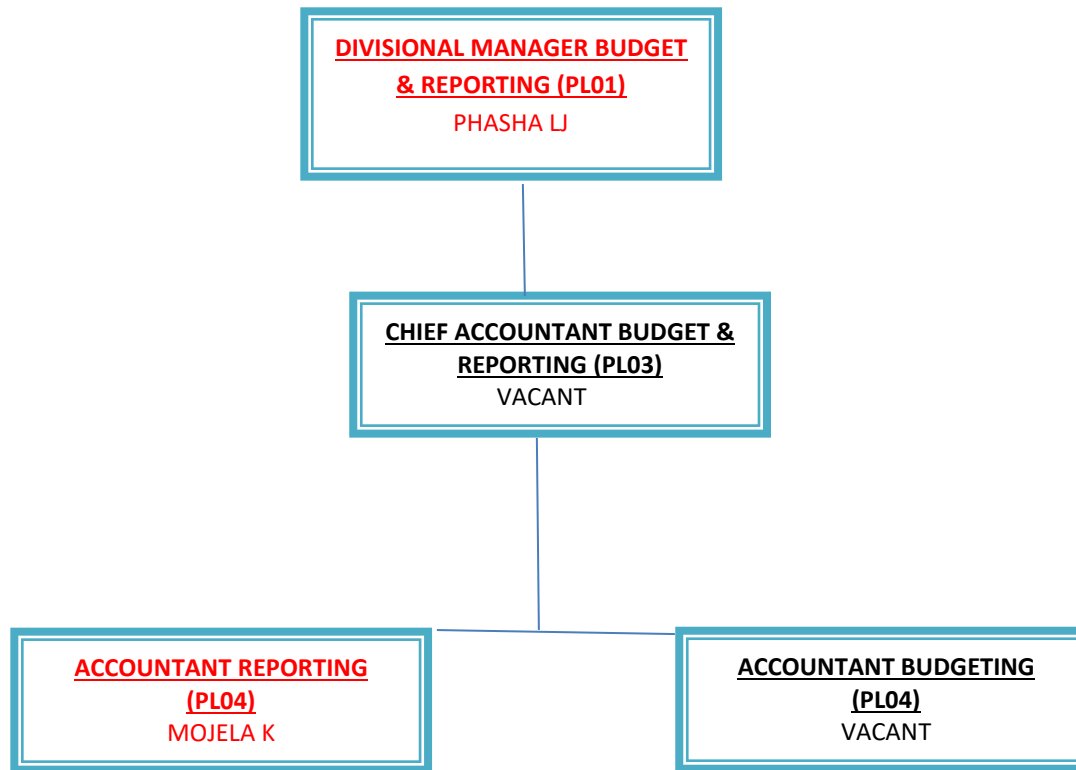
**DIVISION: EXPENDITURE CONTINUE**



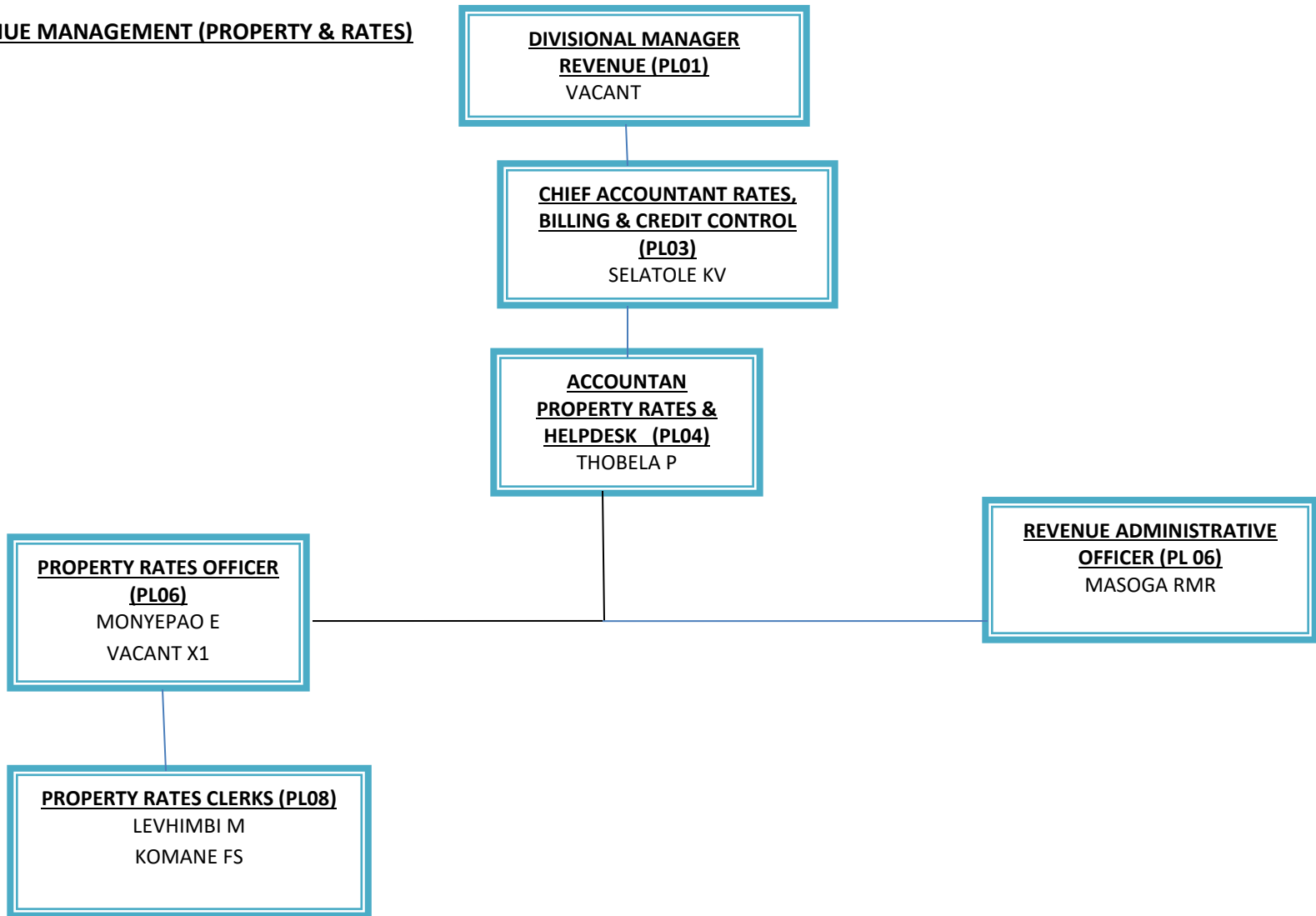
DIVISION ASSETS MANAGEMENT



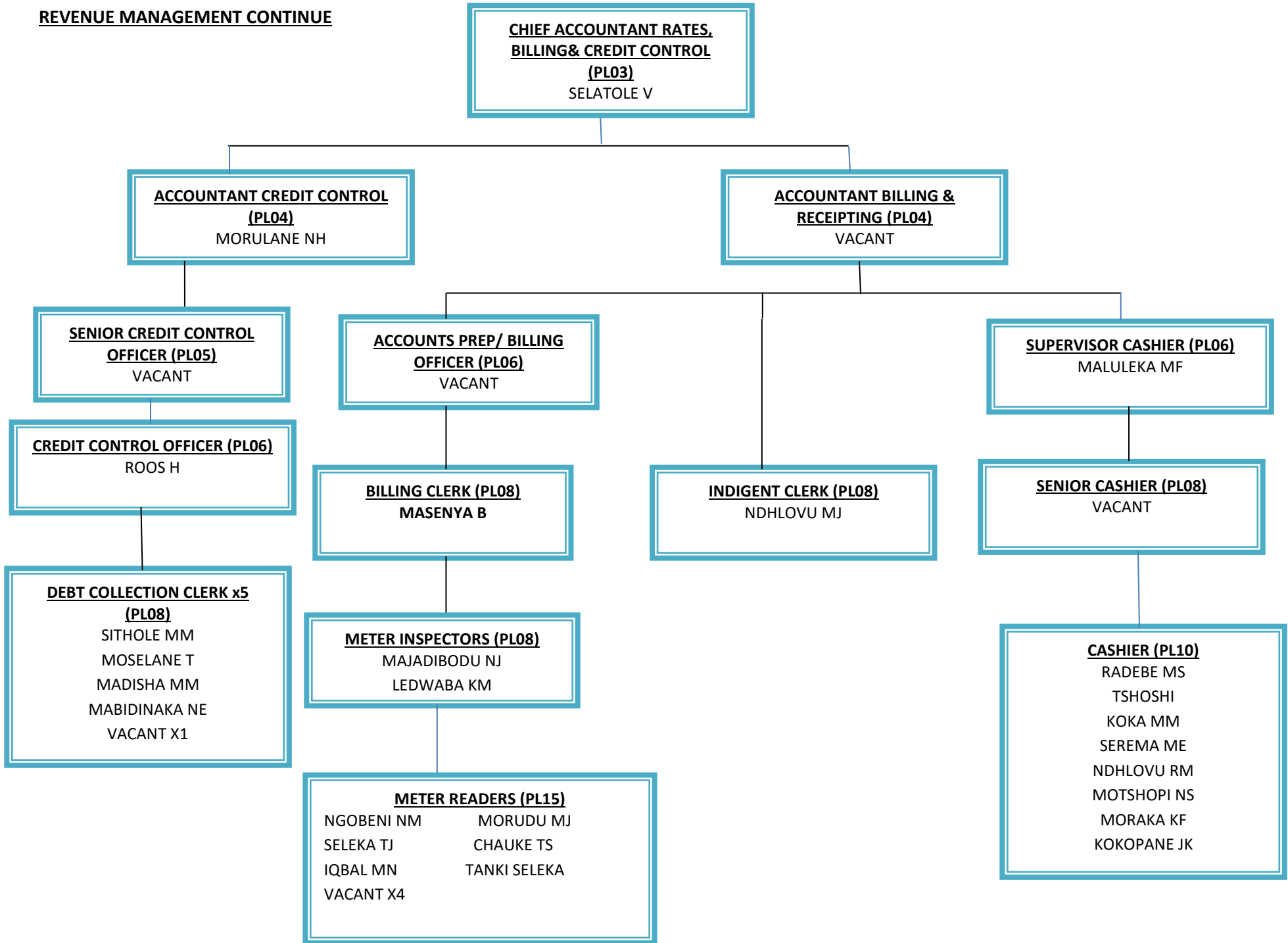
**DIVISION BUDGET & REPORTING**



**DIVISION: REVENUE MANAGEMENT (PROPERTY & RATES)**



**REVENUE MANAGEMENT CONTINUE**



**CHIEF ACCOUNTANT RATES,  
BILLING & CREDIT CONTROL  
(PL03)**  
SELATOLE V

**ACCOUNTANT CREDIT CONTROL  
(PL04)**  
MORULANE NH

**ACCOUNTANT BILLING &  
RECEIPTING (PL04)**  
VACANT

**SENIOR CREDIT CONTROL  
OFFICER (PL05)**  
VACANT

**ACCOUNTS PREP/ BILLING  
OFFICER (PL06)**  
VACANT

**SUPERVISOR CASHIER (PL06)**  
MALULEKA MF

**CREDIT CONTROL OFFICER (PL06)**  
ROOS H

**BILLING CLERK (PL08)**  
MASENYA B

**INDIGENT CLERK (PL08)**  
NDHLOVU MJ

**SENIOR CASHIER (PL08)**  
VACANT

**DEBT COLLECTION CLERK x5  
(PL08)**  
SITHOLE MM  
MOSELANE T  
MADISHA MM  
MABIDINAKA NE  
VACANT X1

**METER INSPECTORS (PL08)**  
MAJADIBODU NJ  
LEDWABA KM

**METER READERS (PL15)**  
NGOBENI NM      MORUDU MJ  
SELEKA TJ        CHAUKE TS  
IQBAL MN        TANKI SELEKA  
VACANT X4

**CASHIER (PL10)**  
RADEBE MS  
TSHOSHI  
KOKA MM  
SEREMA ME  
NDHLOVU RM  
MOTSHOPI NS  
MORAKA KF  
KOKOPANE JK